

# FCI Constructors, Inc.

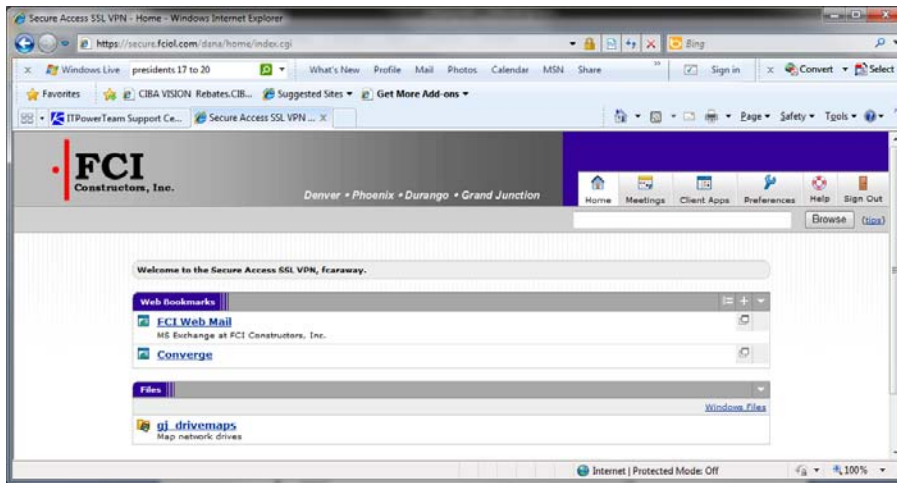
## SSL VPN Login Instructions

- 1) Open your Internet Browser (Internet Explorer).
- 2) Follow this link – <https://secure.fciol.com> and the following screen appears.



- 3) Use your standard username (first initial + lastname) and password.
- 4) If this is the first time you attempt to login on the current computer, watch the menu bar and any prompts to install software...Run or install.
- 5) You may or may not receive a DOS (black) window prompting for username and password again.
- 6) If you do receive the DOS window, use your standard username using the format of fciol\username. When typing your password, nothing will appear on the screen so be careful to type it correctly.

7) Once logged in, you will receive the following screen



8) There should also be an icon which looks like a gold lock in your system tray in the lower right corner of the screen.

9) Open MyComputer and verify you have a Y: drive mapped. If there is, you are done, if not, click the link **??\_drivemaps** and click **vpn\_??\_bat** and run the file. This should bring up the DOS window. Login using the instructions in task 6 above.

Sometimes, this process does not work exactly as described above so please feel free to call Robbin or Beaver for help.