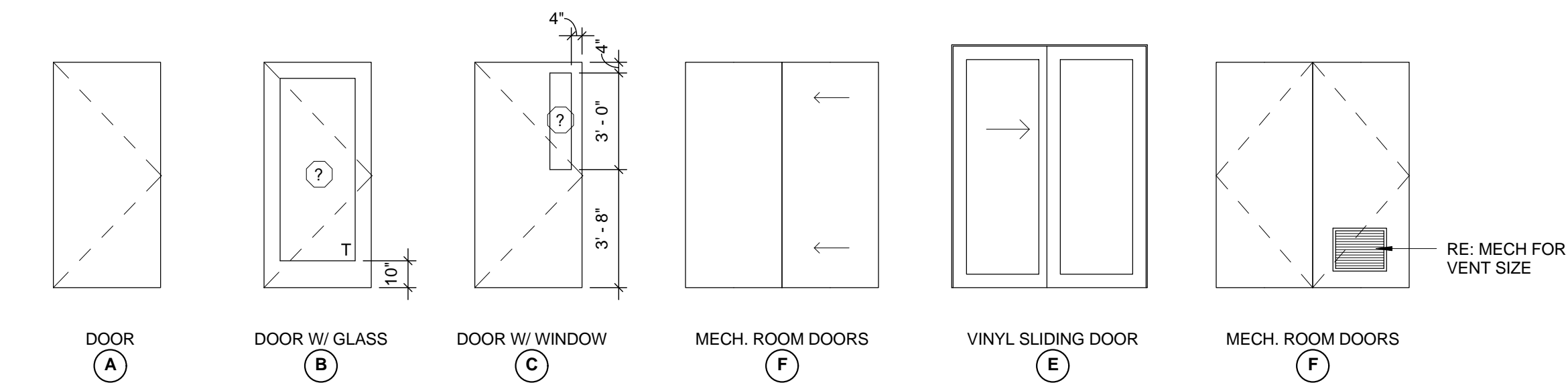




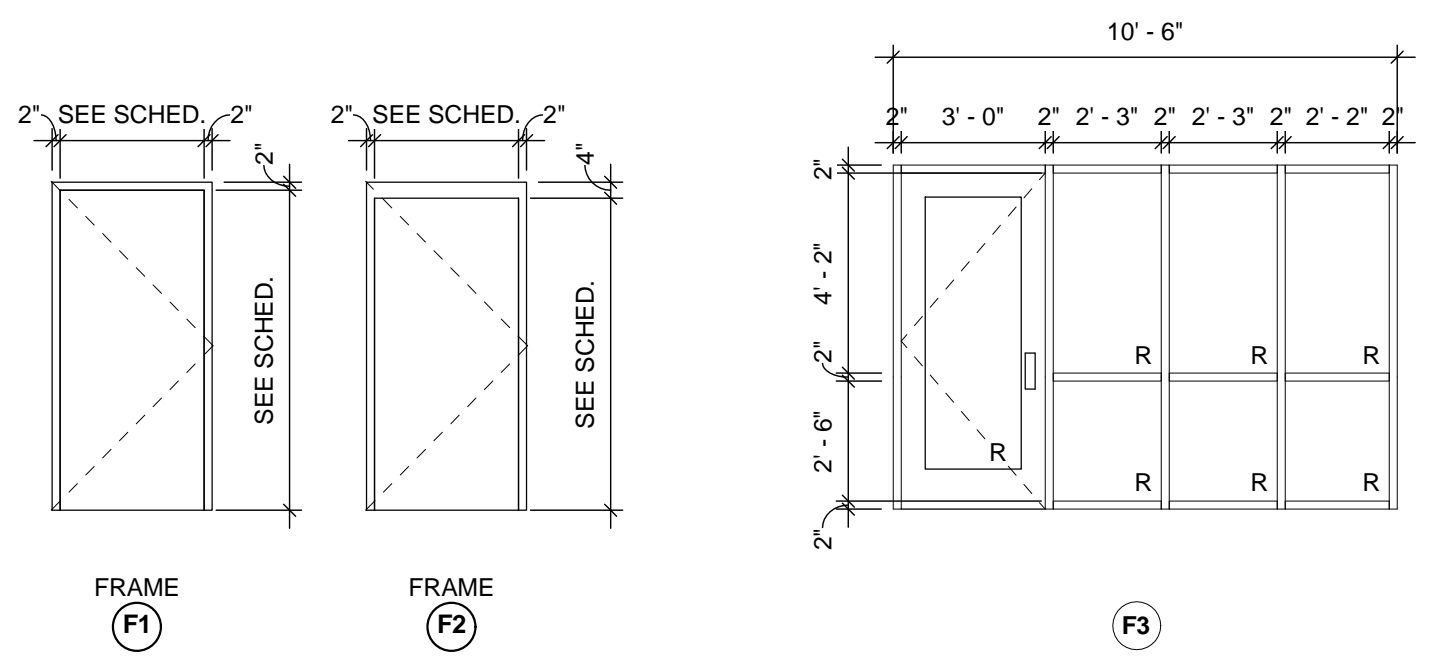
RENAISSANCE WEST  
END FLATS



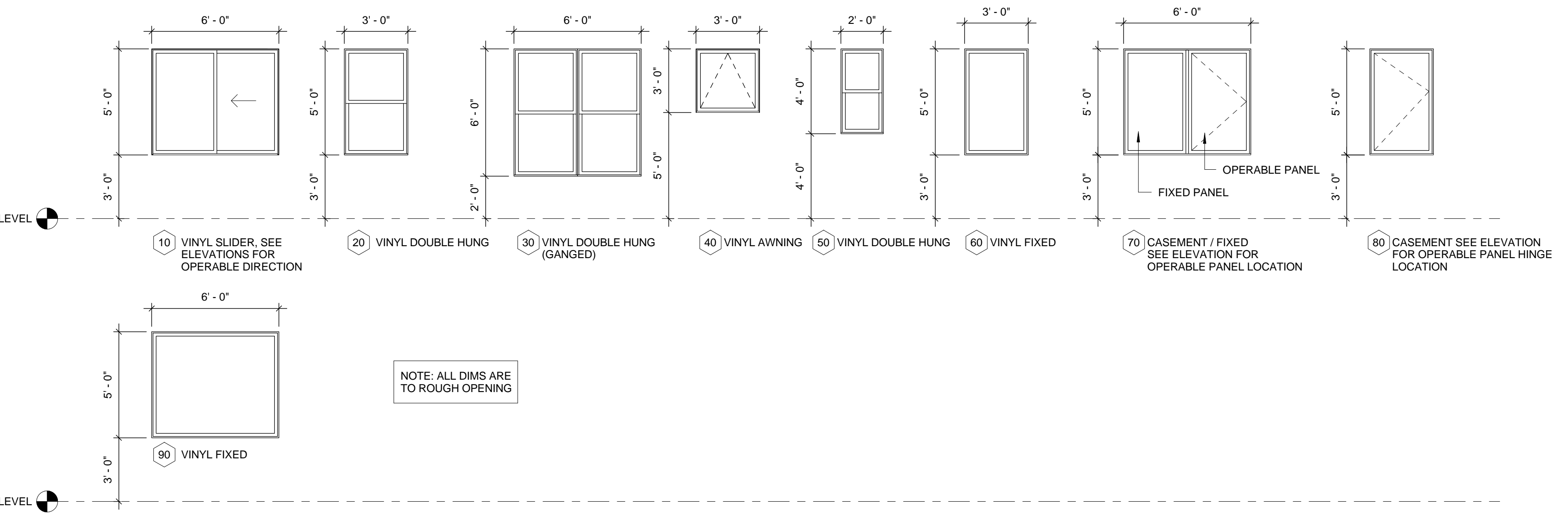
GLAZING LEGEND

- T TEMPERED GLASS
- R RATED GLASS
- SPANDREL GLASS
- ARCHITECTURAL LOUVER

DOOR TYPES  
1/4" = 1'-0"



DOOR FRAME TYPES  
1/4" = 1'-0"

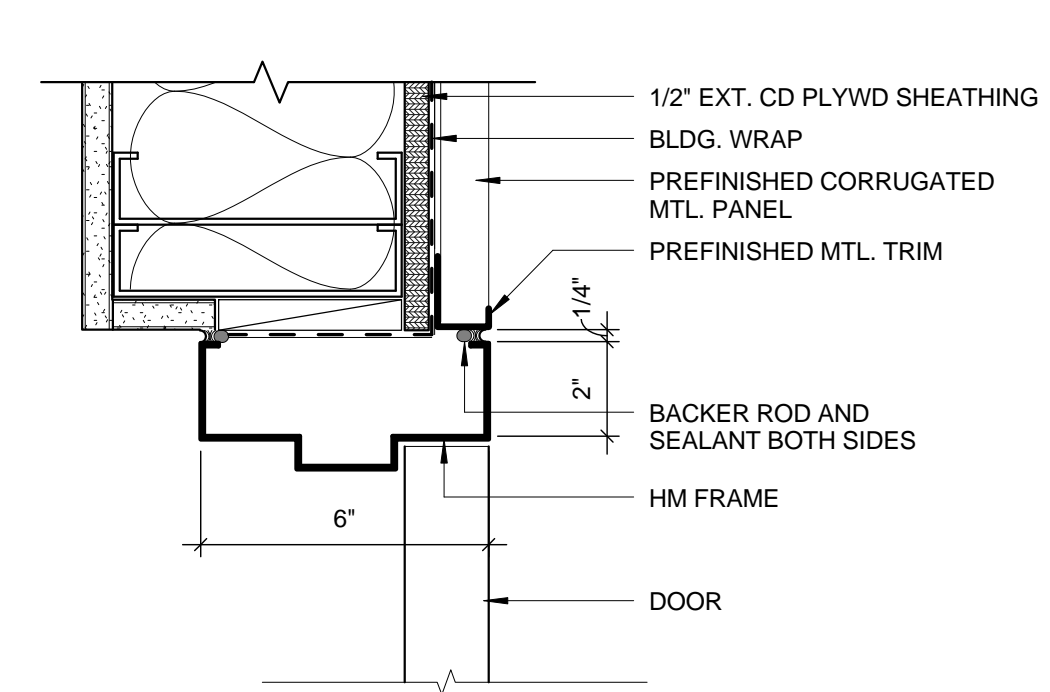


WINDOW LEGEND  
1/4" = 1'-0"

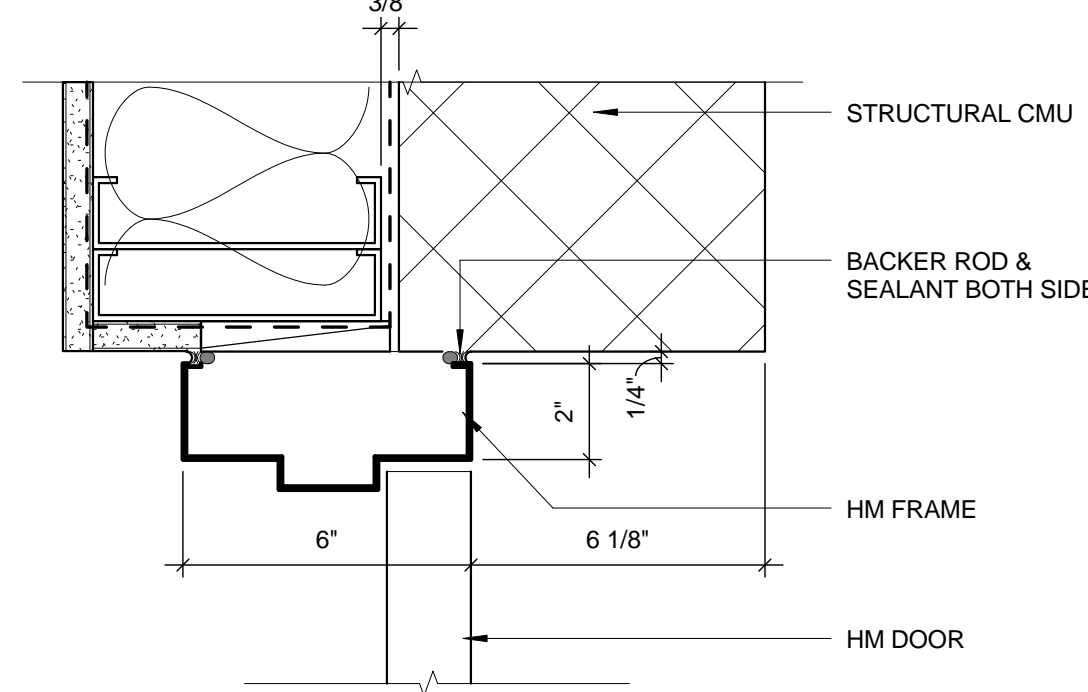
No.	Type	Pair	Door				Door Schedule				Frame				Fire Rating	Comments
			Width	Height	Thickness	Material	Finish	Type	Material	Finish	Head	Jamb	Threshold			
LEVEL 1																
100	B		3'-6"	7'-0"	1 3/4"	ALUM.			ALUM.							
101	B		3'-6"	7'-0"	1 3/4"											
101a	A		3'-0"	7'-0"	1 3/4"											
101b	A		3'-0"	7'-0"	1 3/4"	HM			F1	HM-1						
102	A		3'-0"	7'-0"	1 3/4"	SC WOOD			F1	HM-1						
103	A		3'-0"	7'-0"	1 3/4"	SC WOOD			F1	HM-1						
104	A		3'-0"	7'-0"	1 3/4"	SC WOOD			F1	HM-1						
105	A		3'-0"	7'-0"	1 3/4"											
106	A	x	6'-0"	7'-0"	1 3/4"	HM			F2	HM-1						
106a	A		3'-0"	7'-0"	1 3/4"	HM			F1	HM-1						
107	A	x	6'-0"	7'-0"	1 3/4"	HM			F2	HM-1						
107a	A		3'-0"	7'-0"	1 3/4"	HM			F1	HM-1						
108	A		3'-0"	7'-0"	1 3/4"	SC WOOD			F1	HM-1						
109	A		3'-0"	7'-0"	1 3/4"	SC WOOD			F1	HM-1						
110	A		3'-0"	7'-0"	1 3/4"	SC WOOD			F1	HM-1						
111	A		3'-0"	7'-0"	1 3/4"	HM			F1	HM-1						
112	A		3'-0"	7'-0"	1 3/4"	SC WOOD			F1	HM-1						
113	A		3'-0"	7'-0"	1 3/4"	SC WOOD			F1	HM-1						
114	A		3'-0"	7'-0"	1 3/4"	SC WOOD			F1	HM-1						
115	A		3'-0"	7'-0"	1 3/4"	SC WOOD			F1	HM-1						
116	A		3'-0"	7'-0"	1 3/4"	SC WOOD			F1	HM-1						
117	A		3'-0"	7'-0"	1 3/4"	HM			F1	HM-1						
118	A		3'-0"	7'-0"	1 3/4"	HM			F1	HM-1						
119	A		3'-0"	7'-0"	1 3/4"	HM			F2	HM-1						
120	A	x	6'-0"	7'-0"	1 3/4"	HM			F2	HM-1						
121	A		3'-0"	7'-0"	1 3/4"	SC WOOD			F1	HM-1						
122	A		3'-0"	7'-0"	1 3/4"	SC WOOD			F1	HM-1						
150	B		3'-0"	7'-0"	1 3/4"	ALUM.										
151	B		3'-0"	7'-0"	1 3/4"	ALUM.										
152	B		3'-0"	7'-0"	1 3/4"	ALUM.										
153	B		3'-0"	7'-0"	1 3/4"	ALUM.										
154	B		3'-0"	7'-0"	1 3/4"	ALUM.										
155	B	x	6'-0"	7'-0"	1 3/4"											
156	A		3'-0"	7'-0"	1 3/4"	HM			F2	HM-1						
157	A		3'-0"	7'-0"	1 3/4"	HM			F2	HM-1						
158	A		3'-0"	7'-0"	1 3/4"	HM			F2	HM-1						
159	A		3'-0"	7'-0"	1 3/4"	HM			F2	HM-1						
160	A		3'-0"	7'-0"	1 3/4"	HM			F2	HM-1						
161	A		3'-0"	7'-0"	1 3/4"	HM			F2	HM-1						
162			3'-4"													Custom Metal Gate
163			3'-4"													Custom Metal Gate
170			3'-4"													Custom Metal Gate
171		x	6'-2"	7'-6"	2"											Custom Metal Gate
172		x	6'-2"	7'-6"	2"											Custom Metal Gate
173			3'-4"													Custom Metal Gate
174			3'-4"													Custom Metal Gate
LEVEL 2																
200	A	x	7'-0"	7'-0"	1 3/4"	HM			F1	HM-1						
201	B		3'-0"	7'-0"	1 3/4"	SC WOOD			F1	ALUM.						
202	A		3'-0"	7'-0"	1 3/4"	SC WOOD			F1	HM-1						
203	A	x	6'-0"	7'-0"	1 3/4"	SC WOOD			F1	HM-1						
204	C		3'-0"	7'-0"	1 3/4"	SC WOOD			F1	HM-1						
205	A		3'-0"	7'-0"	1 3/4"	SC WOOD			F1	HM-1						
206	A		3'-0"	7'-0"	1 3/4"	SC WOOD			F1	HM-1						
207	B		3'-0"	7'-0"	1 3/4"	SC WOOD			F3	HM-1						
207a	B		3'-0"	7'-0"	1 3/4"	ALUM.										
208	A		3'-0"	7'-0"	1 3/4"	SC WOOD			F1	HM-1						
209	A		3'-0"	7'-0"	1 3/4"	SC WOOD			F1	HM-1						
210	B		3'-0"	7'-0"	1 3/4"	SC WOOD			F3	HM-1						
211	B		3'-0"	7'-0"	1 3/4"	SC WOOD			F3	HM-1						
211a	B		3'-0"	7'-0"	1 3/4"	ALUM.										
212	A	x	6'-0"	7'-0"	1 3/4"	SC WOOD			F1	HM-1						
213	A	x	6'-0"	7'-0"	1 3/4"	SC WOOD			F1	HM-1						
214	A		3'-0"	7'-0"	1 3/4"	SC WOOD			F1	HM-1						
215	A		3'-0"	7'-0"	1 3/4"	HM			F2	HM-1						
216	A		3'-0"	7'-0"	1 3/4"	HM			F2	HM-1						
217	B		3'-0"	7'-0"	1 3/4"	ALUM.										
218	A	x	5'-0"	7'-0"	1 3/4"	SC WOOD			F1	HM-1						
219	A		3'-0"	7'-0"	1 3/4"	HM			F1	HM-1						
LEVEL 3																
300	A	x	7'-0"	7'-0"	1 3/4"	HM			F1	HM-1						
302	A		3'-0"	7'-0"	1 3/4"	SC WOOD			F1	HM-1						
303	A	x	6'-0"	7'-0"	1 3/4"	SC WOOD			F1	HM-1						
304	C		3'-0"	7'-0"	1 3/4"	SC WOOD			F1	HM-1						
305	A		3'-0"	7'-0"	1 3/4"	SC WOOD			F1	HM-1						
306	A		3'-0"	7'-0"	1 3/4"	SC WOOD			F1	HM-1						
307	A		3'-0"	7'-0"	1 3/4"	SC WOOD			F1	HM-1						
309	B		3'-0"	7'-0"	1 3/4"	ALUM.			F1	ALUM.						
310	A		3'-0"	7'-0"	1 3/4"	HM			F2	HM-1						
311	A		3'-0"	7'-0"	1 3/4"	HM			F2	HM-1						
318	A	x	5'-0"	7'-0"	1 3/4"	SC WOOD			F1	HM-1						
319	A		3'-0"	7'-0"	1 3/4"	SC WOOD			F1	HM-1						
LEVEL 5																
500	A	x	7'-0"	7'-0"	1 3/4"	HM			F1	HM-1						
502	A		3'-0"	7'-0"	1 3/4"	SC WOOD			F1	HM-1						
503	A	x	6'-0"	7'-0"	1 3/4"	SC WOOD			F1	HM-1						
504	C		3'-0"	7'-0"	1 3/4"	SC WOOD			F1	HM-1						
504a	A		3'-0"	7'-0"	1 3/4"	HM			F1	HM-1						
505	A		3'-0"	7'-0"	1 3/4"	SC WOOD			F1	HM-1						
506	A		3'-0"	7'-0"	1 3/4"	SC WOOD			F1	HM-1						
507	A		3'-0"	7'-0"	1 3/4"	SC WOOD			F1	HM-1						
509	B		3'-0"	7'-0"	1 3/4"	ALUM.			F1	ALUM.						
510	A		3'-0"	7'-0"	1 3/4"	HM			F2	HM-1						
511	A		3'-0"	7'-0"	1 3/4"	HM			F2	HM-1						
518	A	x	5'-0"	7'-0"	1 3/4"	SC WOOD			F1	HM-1						
519	A		3'-0"	7'-0"	1 3/4"	SC WOOD			F1	HM-1						
ROOF T.O. SHEATHING (LOW)																
600	A		3'-0"	7'-0"	1 3/4"	HM			F1	HM-1						

Mark	Pair	Type	Door				Unit Door Schedule				Fire Rating	Comments
			Width	Height	Thickness	Material	Finish	Type	Material	Finish		
10		A	3'-0"	7'-0"	1 3/4"	SC WOOD			F1	HM-1	20 MIN	Unit Entry Door
11		A	2'-0"	7'-0"	1 3/8"	HC WOOD			F1	HM-2		Single Interior Unit Door
12		A	2'-10"	7'-0"	1 3/8"	HC WOOD			F1	HM-2		Single Interior Unit Door
13		A	3'-0"	7'-0"	1 3/8"	HC WOOD			F1	HM-2		Single Interior Unit Door
14	x	F	4'-0"	7'-0"	1 3/8"	HC WOOD			F1	HM-2		Double Interior Unit Door
15		D	4'-0"	7'-0"	1 3/8"	HC WOOD			F1	HM-2		Sliding Closet Door
16		D	5'-0"	7'-0"	1 3/8"	HC WOOD			F1	HM-2		Sliding Closet Door
20		E	6'-0"	8'-0"	2"							VINYL SLIDING DOOR

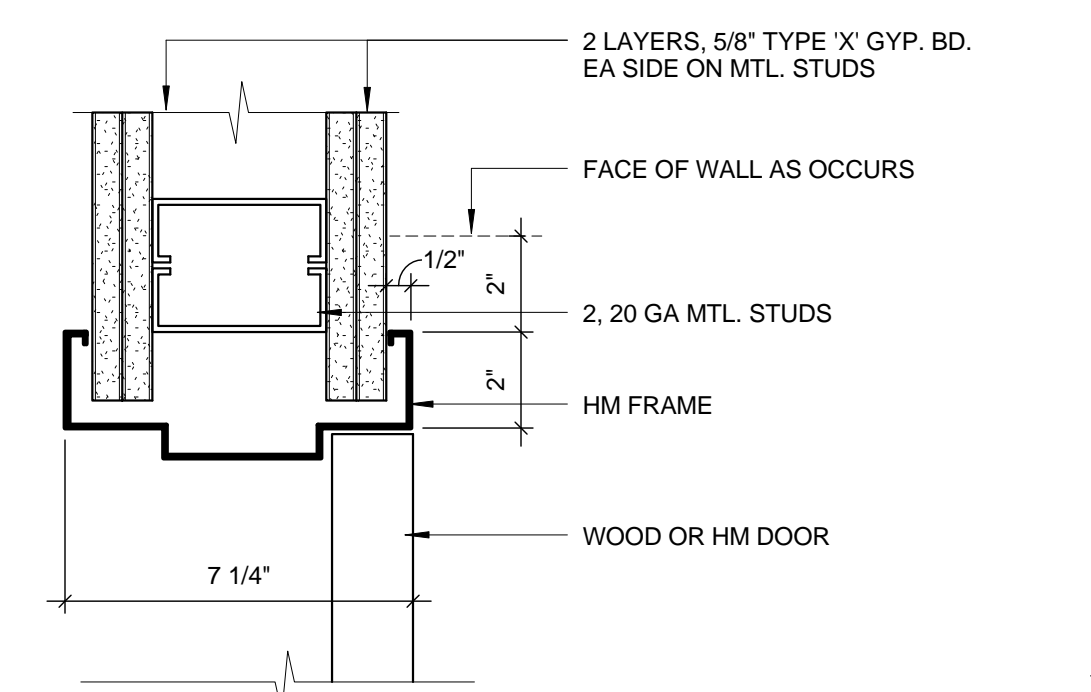
HM-1: HOLLOW METAL FRAME  
HM-2: LIGHT GAUGE/PRE-HUNG HOLLOW METAL FRAME



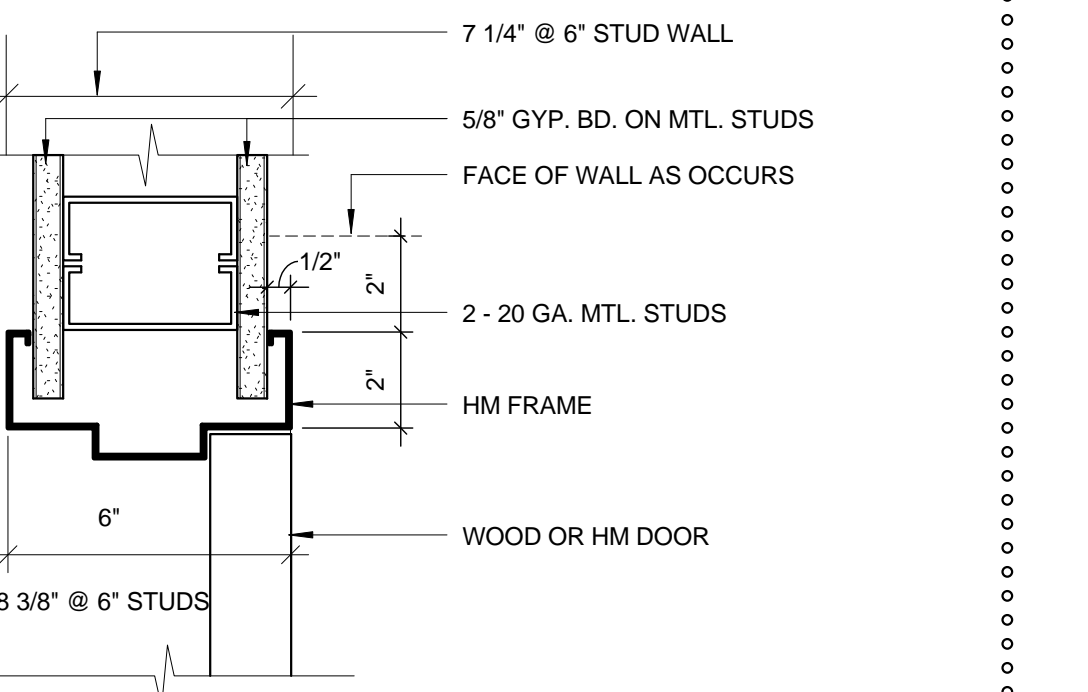
4 METAL PANEL WALL JAMB (HEAD SIM)  
3' = 1'-0"



3 CMU WALL JAMB (HEAD SIM)  
3' = 1'-0"



2 RATED GYP. WALL JAMB (HEAD SIM)  
3' = 1'-0"



1 TYP. GYP. WALL JAMB (HEAD SIM)  
3' = 1'-0"

DOOR / WINDOW  
SCHEDULE

100% CONSTRUCTION  
DOCUMENTS  
01 SEPTEMBER 2010

PROJECT No.	PRINCIPAL ARCH	PROJECT MNGR	DRAWN BY
29007	DH	AA	JG

SHEET No.  
**A-700**



All reports, plans, specifications, computer files, field data, notes and other documents and instruments prepared by the Architect as instruments of service shall remain the property of the Architect. The Architect shall retain all common law, statutory and other reserved rights, including copyright thereto.















