

A R C H I T E C T S

Date - 7/25/11

Ref: - Addendum #004

Project: Plateau Valley Medical Clinic

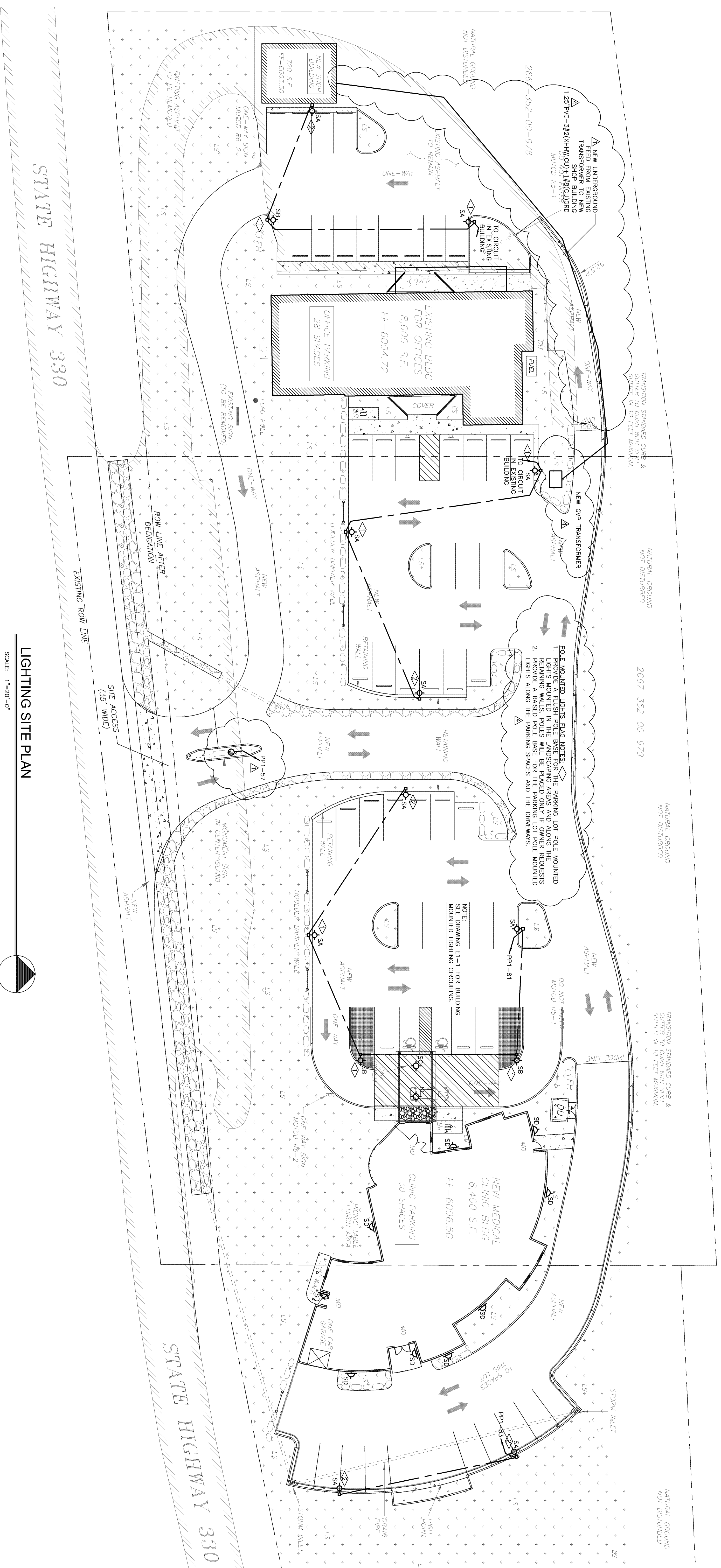
Bid Documents Issued: 06July2011

By: Wagner/Galloway Architects LLC

Attachments:

The Drawings, Specifications and Contract Documents on these Projects are modified, corrected, supplemented and/or superseded as hereinafter described. It will be construed that each bidder's proposal is submitted with full knowledge of all modifications and supplemental data specified herewith. This addendum may affect pricing. Failure to acknowledge this addendum may cause for rejection of bid.

The following Items Comprise Addendum #4 and refer to the questions on the FCI Design Review Comments received 18July11.

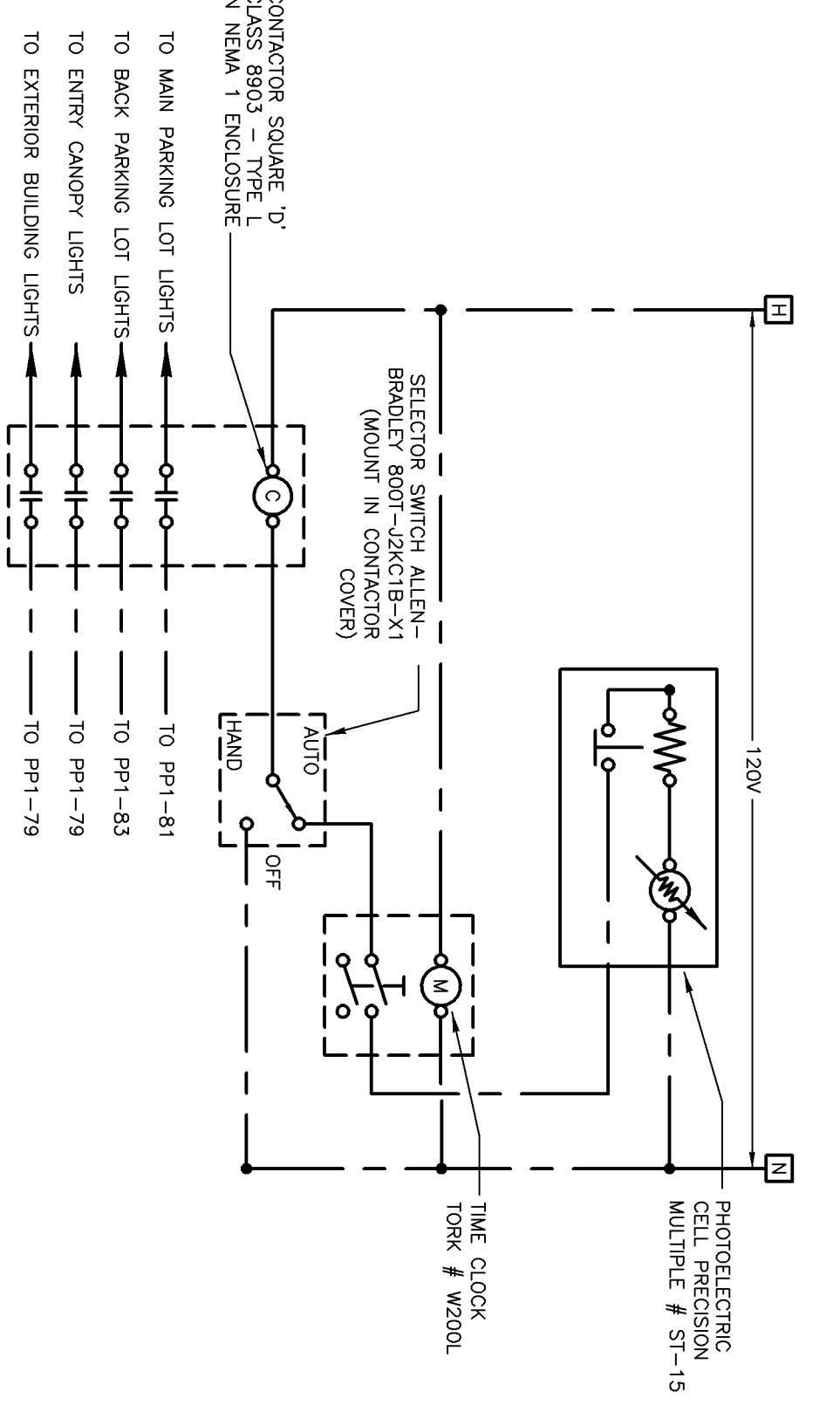


LUMINAIRE SCHEDULE

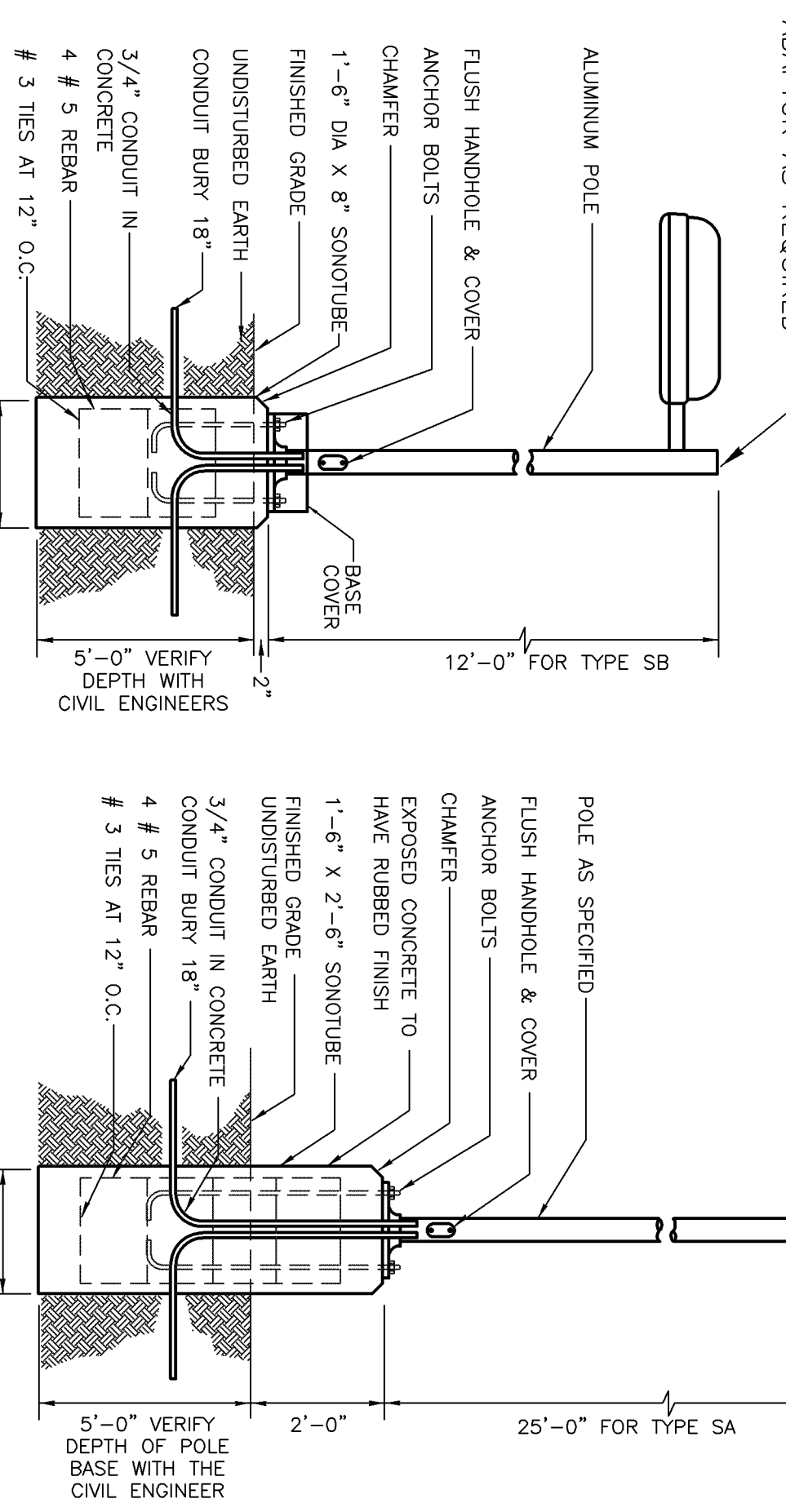
TYPE	MANUFACTURER CATALOG NO.	MANUFACTURER CATALOG NO.	VOLTAGE MOUNTING # OF LAMPS	BALLAST LAMP TYPE LAMP CAT. #	DESCRIPTION
SA	SPALDING LIGHTING CR1-A-P25-H4-F-Q-PS-LHHS	APPROVED EQUIVALENT	120 25' TALL POLE	HI POWER FACTOR PULSE START MH AREA LIGHT, PLATINUM SILVER	21.75"X16"X6.75" H. 6" T. CMMARRON SERIES AREA LIGHT, ARM BRACKET, PLATINUM SILVER COLOR, FLAT LENS, FORWARD THROW
SB	SPALDING LIGHTING CR1-A-P10-H5-F-Q-PS-LHHS	APPROVED EQUIVALENT	120 12' TALL POLE	HI POWER FACTOR PULSE START MH 100W	21.75"X16"X6.75" H. 6" T. CMMARRON SERIES AREA LIGHT, ARM BRACKET, PLATINUM SILVER COLOR, FLAT LENS, THE 5 DISTRIBUTION
SC	HUBBELL OUTDOOR LIGHTING R9-70H	APPROVED EQUIVALENT	120 EXTERIOR CANOPY	HI POWER FACTOR PULSE START MH	11.4" DIA X 7.4" H ROUND VANDAL RESISTANT CEILING MOUNTED LIGHT LAMP CONDUIT
SD	HUBBELL OUTDOOR LIGHTING R1P-50PS9-FT-PL	APPROVED EQUIVALENT	120 EXTERIOR BLDG	HI POWER FACTOR PULSE START MH	18.1" DIA X 10.4" H ROUND VANDAL RESISTANT CEILING MOUNTED LIGHT LAMP CONDUIT ARCHITECTURAL WALLPACK PLATINUM FINISH, FORWARD THROW. I.D.A. APPROVED

- NOTES:**
- ELECTRICAL CONTRACTOR IS TO ORDER ALL HARDWARE AND COMPONENTS NECESSARY FOR A FULL AND COMPLETE INSTALLATION AND MAINTENANCE OF EACH LUMINAIRE.
 - ALL POLES TO BE STRAIGHT POLE, COLOR TO MATCH LUMINAIRES. POLE SHAFT WILL BE RATED FOR WIND GUSTS OF 100 MILES/HOUR.
 - ALL OUTSIDE LIGHT SOURCES SHALL COMPLY WITH SECTION 7.2F OF THE ZONING AND DEVELOPMENT CODE. ALL LIGHT TRESPASS AND DARK SKY INITIATIVES PER LOCAL CITY ORDINANCES.
 - NOTIFY ENGINEER OF ANY OBSTRUCTIONS TO POLE PLACEMENT IMMEDIATELY BEFORE PROCEEDING.
 - ORDER ALL POLE MOUNTED LUMINAIRES WITH MULTI-TAP BALLAST AND FIELD VERIFY AVAILABLE VOLTAGE FOR EACH LUMINAIRE PRIOR TO INSTALLATION.

LIGHTING SITE PLAN
SCALE: 1"=20'-0"



EXTERIOR LIGHTING CONTROL SCHEMATIC
NOT TO SCALE



LIGHT POLE DETAIL
NOT TO SCALE

**PLATEAU VALLEY
MEDICAL CLINIC**
58128 HIGHWAY 330
COLLBRAN, CO 81624

Bighorn Consulting Engineers, Inc.
Mechanical & Electrical Engineers
569 S. Westgate Dr., Suite 1
Grand Junction, CO 81505
phone: 970-241-8709, fax: 970-241-9514

DO NOT ALTER, REPRODUCE, SCALE, DIMENSION, COPY, OR REMOVE ANY PART OF THIS DRAWING WITHOUT THE WRITTEN PERMISSION OF THE ENGINEER. THE ENGINEER'S LIABILITY IS LIMITED TO THE DESIGN AND CONSTRUCTION OF THE SYSTEMS SHOWN HEREON. THE ENGINEER DOES NOT WARRANT THE ACCURACY OF ANY INFORMATION PROVIDED BY OTHERS. THE ENGINEER'S LIABILITY IS LIMITED TO THE DESIGN AND CONSTRUCTION OF THE SYSTEMS SHOWN HEREON.

DATE: 07/12/2011
DRAWN BY: M. MOON
CHECKED BY: M. MOON
SCALE: AS SHOWN
SHEET NUMBER: ES1-1
July 26, 2011 - 11:04:36am

