

ABBREVIATIONS

ABV	above	FRMG	framing	PERIM	perimeter
AFF	above finished floor	FUR	furring, furred	PLAS	plaster, plastic
AP	access panel	FUT	future	PL	plate
AC	acoustical			PG	plate glass
ACT	acoustical tile	GA	gage, gauge	PLY, PWD	plywood
ADJT	adjustable	GAL	gallon	PVC	polyvinyl chloride
AGG	aggregate	GI	galvanized	PCC	precast concrete
A/C	air conditioning	GC	general contractor	PFB	prefabricate
ALT	alternate	GL	glass, glazing	PRF	prefinished
AL	aluminum	GLB	glass block	PSC	prestressed concrete
AB	anchor bolt	GCMU	glazed CMU	PL	property line
ARCH	architect, architectural	GST	glazed structural tile		
AD	area drain	GB	grab bar	QT	quarry tile
ASPH	asphalt	GD	grade, grading		
AT	asphalt tile	CVL	gravel	RAD, r	radius
		GT	grout	RWD	redwood
BSMT	basement	CYP	gypsum	REF	reference
BRG	bearing	GPDW	gypsum drywall	RFL	reflect
BR	bedroom	GPI	gypsum lath	REG	refrigerator
BM	bench mark	OPPL	gypsum plaster	REIN	register
BEL	below			REIN	reinforce
BET	between	HCP	handicap	REM	remove
BLK	black	HD	hand dryer	REQD	required
BLKG	blocking	HRD	hardboard	RES	resilient
BD, BRD	board	HDW	hardware	RR	restroom
BS	both sides	HWD	hardwood	RET	return
BOT	bottom	HDR	header	RA	return air
BRK	brick	HTC	heating	REV	revision
BLDG	building	HVAC	heat/vent/air cond.	ROW	right of way
BUR	built up roofing	HT	height	R	riser
BO	by others	HC	hollow core	RD	roof drain
CAB	cabinet	HM	hollow metal	RH	roof hatch
CPT	carpet	HOR	horizontal	RFG	roofing
CSMT	casement	HP	horsepower	RM	room
CI	cast iron	HB	hose bib	RO	rough opening
CB	catch basin	HWH	hot water heater	RB	rubber base
CK	caulk			RBT	rubber tile
CLG	ceiling	INCL	included	SG	sheet
CHT	ceiling height	ID	inside diameter	SG	sheet glass
CT	ceramic tile	INSUL	insulation	SH	shelf, shelving
CHAM	chamfer	INSF	insulating fill	SGD	sliding glass door
CO	clean out	INT	interior	SIM	similar
CLR	clear, clearance	INV	invert	SKL	skylight
CLOS	closet	JC	janitor's closet	SD	soap dispenser
COL	column	JT	joint	SHT	sheathing
CONC	concrete	JF	joint filler	SG	sheet
CMU	concrete masonry unit	JST	joist	SH	shelf, shelving
CONST	construction	KPL	kickplate	SGD	sliding glass door
CONT	continuous	KIT	kitchen	SIM	similar
CONTR	contractor	KO	knockout	SKL	skylight
CLL	control limit line	LBL	label	SD	solid core
CL	control joint	LAB	laboratory	S	south
CPR	copper	LAD	ladder	SPK	speaker
CG	corner guard	LB	lag bolt	SPEC	specification
CORR	corrugated, corridor	LAM	laminated	SQ	square
CTR	counter	LAV	lavatory	SST	stainless steel
CS	counter sink	L	length	STD	standard
CFL	counterflashing	LT	light	ST	steel
CRS	course	LW	lightweight	STO	storage
DP	dampproofing	LWC	lightweight concrete	SD	storm drain
DL	dead load	LTL	lintel	STR	structural
DTL	detail	LL	live load	SCT	structural clay tile
DIAG	diagonal	LR	living room	SUSP	suspended
DIAM	diameter	LVR	louver	SF	square foot
DPR	dispenser	LP	light pole	TKBD	tackboard
DO	ditto	MB	machine bolt	TEL	telephone
DB	doorbell	MH	manhole	TV	television
DBL	double	MFR	manufacture	TC	terra cotta
DH	double hung	MAS	masonry	TZ	terrazzo
DN	down	MO	masonry opening	THK	thick
DS	downspout	MBR	master bedroom	THR	threshold
DR	drain	MTL	material	TME	to match existing
DWR	drain tile	MAX	maximum	TPTN	toilet partition
DWG	drawing	MECH	mechanic	TPD	toilet paper dispenser
DF	drinking fountain	MC	medicine cabinet	T&G	tongue and groove
		MMB	membrane	TOC	top of concrete
		MET	metal	TOS	top of steel
		MWK	millwork	TOW	top of wall
		MIN	minimum	TB	towel bar
		MIR	mirror	T	tread
		MISC	miscellaneous	TYP	typical
		MLD	moulding	UC	undercut
		MT	mount	UNF	unfinished
		MOV	movable	UR	urinal
		MULL	mullion	VB	vapor barrier
				VERT	vertical
		NAT	natural	VIN	vinyl
		NOM	nominal	VAT	vinyl asbestos tile
		NI	not in contract	VIN B	vinyl base
		NIC	not to scale	VT	vinyl tile
		NTS	not to scale		
		OBS	obscure	WSCT	wainscoat
		OC	on center	WG	wall guard
		OP	opaque	WH	wall hung
		OPG	opening	WC	watercloset
		OPF	opposite	WP	waterproof
		OPH	opposite hand	WWF	welded wire fabric
		OD	outside diameter	W	west
		OH	overhead	WHB	wheel bumper
		OSB	oriented strand board	W	width
				WIN	window
		PNT	point	WG	wire glass
		PNL	panel	WM	wire mesh
		PB	ponic bar	W	with
		PTD	paper towel dispenser	WO	without
		PTR	paper towel receptor	WD	wood
		PBD	particle board	WB	wood base
		PTN	partition		
		PVMT	pavement		
		PED	pedestal		
		PERF	perforate		

GRAPHIC SYMBOLS

	EXISTING POINT ELEVATION
	NEW OR REQUIRED POINT ELEVATION
	EXISTING CONTOURS
	NEW CONTOURS
	TEST BORING
	ELEVATION OR LEVEL LINE
	PROPERTY CORNER
	MATCH LINE
	REVISION
	WINDOW OR GLAZED OPENING
	DOOR NUMBER
	CENTERLINE FLOOR LINE IN EXT. ELEVATION PROJECTED LINE
	PROPERTY OR BOUNDARY LINE
	COLUMN REFERENCE GRID
	BUILDING SECTION NUMBER SHEET NUMBER
	WALL SECTION NUMBER SHEET NUMBER
	ROOM ELEVATION NUMBER SHEET NUMBER
	DETAIL NUMBER REFERENCE SHEET NUMBER
	ROOM NUMBER
	SLOPE DOWN
	LINE OF WALL ABOVE
	BREAK LINE
	FENCE

SYMBOLS AS ABBREVIATIONS

	ANGLE		PENNY
	C/C CENTER TO CENTER		PERPENDICULAR
	CENTERLINE		PLATE
	CHANNEL		ROUND

MATERIALS IN PLAN

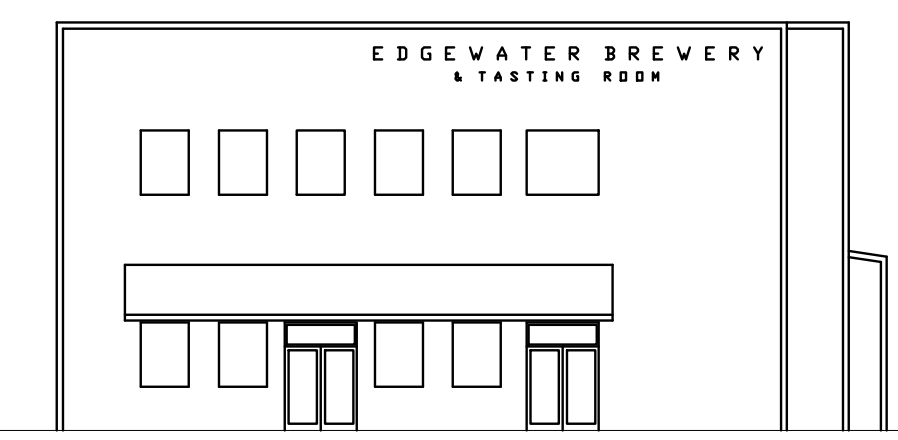
	CONCRETE
	BRICK
	BLOCK (CMU)
	WOOD STUD WALL
	METAL STUD WALL
	WINDOW OR GLAZING
	TWO-HOUR FIRE WALL
	SOUND REDUCING WALL

MATERIALS IN SECTION

	EARTH		PLYWOOD
	GRAVEL		GYPSUM WALL BOARD
	CONCRETE		BATT INSULATION
	STEEL		PLASTER OR STUCCO
	BLOCK (CMU)		RIGID INSULATION
	BRICK		ACOUSTIC TILE
	BLOCKING		FINISH WOOD
	WOOD FRAMING		

EDGEWATER BREWERY & TASTING ROOM

905 STRUTHERS AVENUE
GRAND JUNCTION, COLORADO



CODE DATA:

APPLICABLE CODES: 2006 INTERNATIONAL BUILDING CODES (IBC, IMC, IPC, IECC)
2008 NATIONAL ELECTRICAL CODE (NEC)
2003 ICC/ANSI A117.1 ACCESSIBILITY STANDARDS (1/A)
2006 INTERNATIONAL FIRE CODE
2006 INTERNATIONAL FUEL GAS CODE

OCCUPANCY: A-2 / F-2
CONSTRUCTION TYPE: II-B
SEPARATED OCCUPANCIES PER 508.3.3

FIRE ALARM SYSTEM: YES (MANUAL)
FIRE SPRINKLER SYSTEM: YES (PER 903.3.1.1)

ALLOWABLE SQUARE FOOTAGE: 9,500 SF + 19,000 SF FOR SPRINKLER SYSTEM = 28,500 SF
(BASED ON MOST LIMITING - A-2)

NUMBER OF STORIES ALLOWED: 2 STORIES
ACTUAL HT. & NUMBER OF STORIES: 2 STORIES / 35' HT.

ACTUAL SQUARE FOOTAGE: 12,645 SF TOTAL BUILDING SIZE
640 SF EXTERIOR PATIO SEATING TOTAL

1ST LEVEL:	5,970 SF F-2
	2,205 SF A-2
	8,175 SF TOTAL 1ST LEVEL
	640 SF A-2 (EXTERIOR PATIO)
2ND LEVEL:	2,410 SF F-2
	2,060 SF B
	4,470 SF TOTAL 2ND LEVEL

OCCUPANCY SEPARATION REQ'D: NO SEPARATION REQ'D. BETWEEN A-2 & F-2
(TABLE 508.3.3)

NUMBER OF EXITS REQ'D: 4
NUMBER OF EXITS PROVIDED: 8

EXIT TRAVEL DISTANCE ALLOWED: 100 FT.

PROJECT TEAM:

OWNER/CLIENT
JIM JEFFRIES
GRAND JUNCTION, COLORADO
TELE: 970-201-6781

ARCHITECTURAL:
GREGG ASSOCIATES ARCHITECTURE + PLANNING
GRAND JUNCTION, COLORADO
CONTACT: ROBERT GREGG
TELE: 970-245-9654

MECHANICAL ENGINEER:
BIGHORN CONSULTING ENGINEERS
GRAND JUNCTION, COLORADO
CONTACT: BLAINE BUCK
TELE: 970-241-8709

ELECTRICAL ENGINEER:
BIGHORN CONSULTING ENGINEERS
GRAND JUNCTION, COLORADO
CONTACT: BLAINE BUCK
TELE: 970-241-8709

STRUCTURAL ENGINEER:
SOUDER, MILLER & ASSOCIATES
GRAND JUNCTION, COLORADO
CONTACT: MICHAEL DAVIS
TELE: 970-434-9093

GENERAL CONTRACTOR:
FCI CONSTRUCTORS
GRAND JUNCTION, COLORADO
CONTACT: MICHAEL DAVIS
TELE: 970-434-9093

INDEX OF DRAWINGS

COVER SHEET

T1.0 ABBREVIATIONS & PROJECT DATA

CIVIL

SP-1 SITE PLAN
G-1 SITE GRADING PLAN
G-2 HORIZONTAL GRADING PLAN
U-1 SITE UTILITY PLAN

LANDSCAPE

L1.0 LANDSCAPE PLAN

ARCHITECTURAL

A1.0 1ST LEVEL FLOOR PLAN
DOOR/WALL/WINDOW SCHEDULES
ROOF PLAN

A1.1 2ND LEVEL FLOOR PLAN
DOOR/WALL/WINDOW SCHEDULES

A1.2 KITCHEN & SEATING PLAN
KITCHEN EQUIPMENT SCHEDULE

A1.3 RESTROOM INTERIOR ELEVATIONS
ENLARGED RESTROOM PLANS
MISCELLANEOUS DETAILS
STAIR DETAILS

A2.0 BUILDING ELEVATIONS
A2.1 BUILDING SECTIONS
WALL SECTIONS

STRUCTURAL

S1 FOUNDATION PLAN - NORTH
S2 FOUNDATION PLAN - SOUTH
S3 2ND LEVEL FLOOR FRAMING PLAN
S4 ROOF FRAMING PLAN
S5 BUILDING SECTIONS
S6 BUILDING SECTIONS
S7 STRUCTURAL DETAILS
S8 STRUCTURAL DETAILS
S9 STRUCTURAL DETAILS
S10 STRUCTURAL DETAILS
S11 STRUCTURAL DETAILS
S12 SPECIFICATIONS

MECHANICAL

M1-1 1ST LEVEL MECHANICAL PLAN
M1-2 2ND LEVEL MECHANICAL PLAN
M1-3 MECHANICAL SCHEDULES
M1-4 MECHANICAL SPECIFICATIONS & DETAILS

PLUMBING

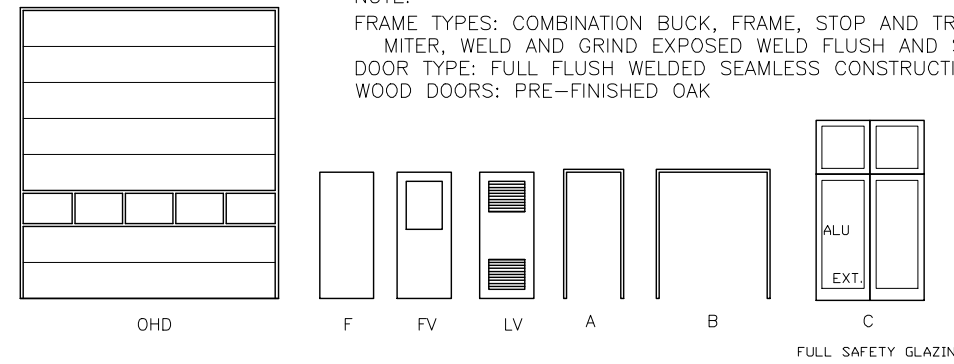
P1-1 1ST LEVEL PLUMBING
P1-2 2ND LEVEL PLUMBING
P1-3 1ST LEVEL PLUMBING
P1-4 2ND LEVEL PLUMBING
P1-5 PLUMBING SCHEDULES/CHANGE

ELECTRICAL

E1-1 1ST LEVEL LIGHTING PLAN
E1-2 2ND LEVEL LIGHTING PLAN
E2-1 1ST LEVEL POWER PLAN
ELECTRICAL SCHEDULES
E2-2 2ND LEVEL POWER PLAN
ELECTRICAL SCHEDULES

NO.	DOOR			FRAME		DETAIL	LABEL (MIN.)	NOTES	
	SIZE			MATERIAL	TYPE				
	W	H	T						
001	3'-0"	7'-0"	1 3/4"	HM	F	HM	A	C/D	
002	3'-0"	7'-0"	1 3/4"	HM	F	HM	A	C/D	
003	3'-0"	7'-0"	1 3/4"	HM	F	HM	A	C/D	
004	3'-0"	7'-0"	1 3/4"	HM	F	HM	A	C/D	
005	3'-0"	7'-0"	1 3/4"	HM	F	HM	A	C/D	
006	6'-0"	7'-0"	1 3/4"	ALU	C	HM	A	C/D	(2) ALUMINUM GLASS STOREFRONT DOORS W/ TRANSOM WINDOWS
007	6'-0"	7'-0"	1 3/4"	ALU	C	HM	A	C/D	(2) ALUMINUM GLASS STOREFRONT DOORS W/ TRANSOM WINDOWS
008	6'-0"	7'-0"	1 3/4"	ALU	C	HM	A	C/D	(2) ALUMINUM GLASS STOREFRONT DOORS W/ TRANSOM WINDOWS
009	3'-0"	7'-0"	1 3/4"	HM	F	HM	A	C/D	
010	3'-0"	7'-0"	1 3/4"	HM	F	HM	A	C/D	
011	3'-0"	7'-0"	1 3/4"	HM	LV	HM	A	C/D	
012	3'-0"	7'-0"	1 3/4"	HM	LV	HM	A	C/D	
013	3'-0"	7'-0"	1 3/4"	HM	LV	HM	A	C/D	
014	3'-0"	7'-0"	1 3/4"	HM	F	HM	A	C/D	
015	3'-0"	7'-0"	1 3/4"	HM	F	HM	A	C/D	
016	4'-0"	7'-0"	1 3/4"	HM	F	HM	A	C/D	
017	3'-0"	7'-0"	1 3/4"	WOOD	F	HM	A	C/D	
018	3'-0"	7'-0"	1 3/4"	WOOD	F	HM	A	C/D	
019	3'-0"	7'-0"	1 3/4"	WOOD	F	HM	A	C/D	
020	3'-0"	7'-0"	1 3/4"	WOOD	F	HM	A	C/D	
021	3'-0"	7'-0"	1 3/4"	HM	F	HM	A	C/D	
022	3'-0"	7'-0"	1 3/4"	WOOD	F	HM	A	C/D	
023	3'-0"	7'-0"	1 3/4"	WOOD	F	HM	A	C/D	
024	3'-0"	7'-0"	1 3/4"	HM	F	HM	A	C/D	
025	9'-0"	12'-0"		MTL	SL	MTL			OVERHEAD DOOR (W/ ELEC. OPERATORS & "HIGH LIFT" KITS)
026	9'-0"	12'-0"		MTL	SL	MTL			OVERHEAD DOOR (W/ ELEC. OPERATORS & "HIGH LIFT" KITS)
027	9'-0"	12'-0"		MTL	SL	MTL			OVERHEAD DOOR (W/ ELEC. OPERATORS & "HIGH LIFT" KITS)
028	9'-0"	12'-0"		MTL	SL	MTL			OVERHEAD DOOR (W/ ELEC. OPERATORS & "HIGH LIFT" KITS)
029	3'-0"	7'-0"	1 3/4"	WOOD	F	HM	A	C/D	
030	3'-0"	7'-0"	1 3/4"	WOOD	F	HM	A	C/D	

NOTE:
 FRAME TYPES: COMBINATION BUCK, FRAME, STOP AND TRIM TYPE STANDARD OR DRYWALL TYPE.
 MITER, WELD AND GRIND EXPOSED WELD FLUSH AND SMOOTH.
 DOOR TYPES: FULL FLUSH WELDED SEAMLESS CONSTRUCTION.
 WOOD DOORS: PRE-FINISHED OAK



MARK	SIZE (W x H)	REMARKS	SAFETY GLAZING REQ'D
Ⓚ	3'-6" x 3'-6"	ALU BRONZED FRAME, F.G./LOW E	
Ⓛ	6'-0" x 3'-6"	ALU BRONZED FRAME, F.G./LOW E	
Ⓧ	10'-0" x 6'-0"	ALU BRONZED FRAME, F.G. TEMPERED DR WIRE GLASS	YES

GLAZING INFORMATION

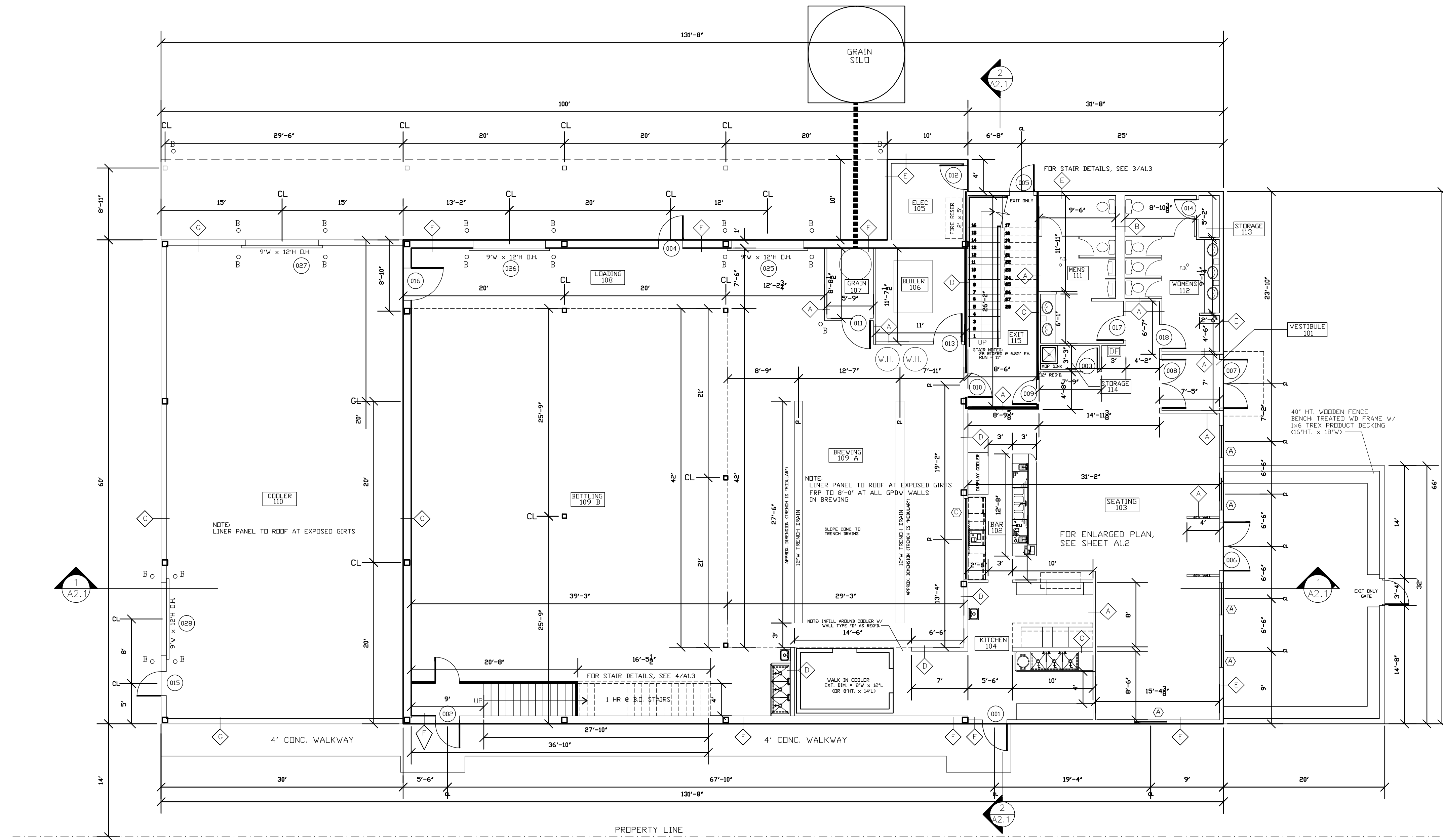
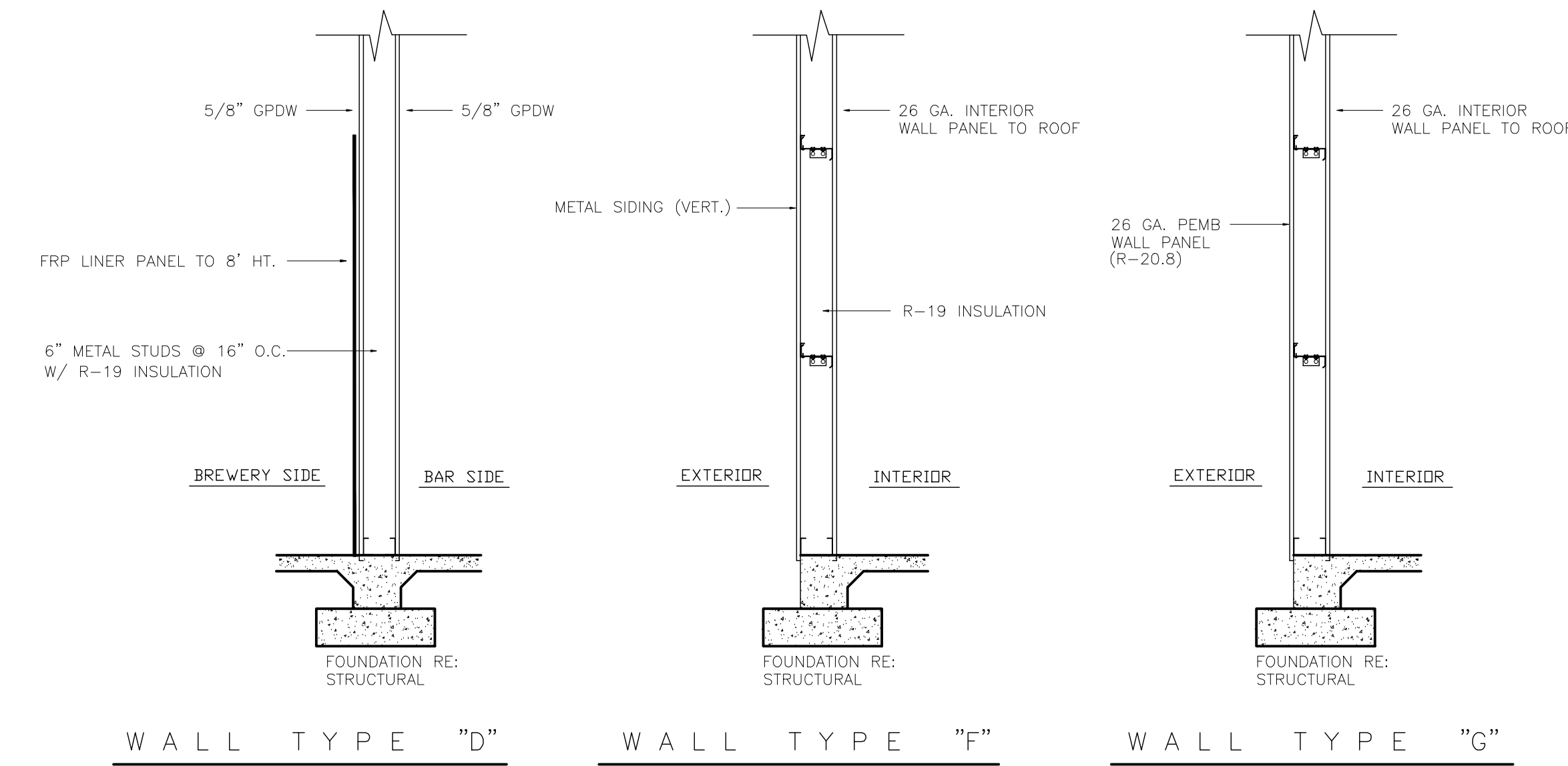
- INRESS AND EGRESS DOORS EXCEPT Jalousies.
- FIXED AND SLIDING PANELS OF SLIDING DOOR ASSEMBLIES AND PANELS IN SHINGING DOORS OTHER THAN HORIZONTAL DOORS.
- UNFRAMED SLIDING DOORS.
- FIXED OR OPERABLE PANELS ADJACENT TO A DOOR WHERE THE NEAREST EXPOSED EDGE OF THE GLAZING IS WITHIN A 24 INCH ARC OF OTHER VERTICAL EDGE OF THE DOOR IN A CLOSED POSITION AND WHERE THE BOTTOM EXPOSED EDGE OF THE GLAZING IS LESS THAN 60 INCHES ABOVE THE FINISH SURFACE.
- INDIVIDUAL FIXED OR OPERABLE PANELS OTHER THAN THOSE LOCATIONS DESCRIBED ABOVE, THAT MEET ALL OF THE FOLLOWING CONDITIONS:
 - EXPOSED AREA OF AN INDIVIDUAL PANE GREATER THAN 9 SQUARE FEET.
 - EXPOSED BOTTOM EDGE LESS THAN 18 INCHES ABOVE THE FLOOR.
 - EXPOSED TOP EDGE GREATER THAN 36 INCHES ABOVE THE FLOOR.
 - ONE OR MORE WALKING SURFACES WITHIN 36 INCHES HORIZONTALLY OF THE PLANE OF THE GLAZING.

INTERIOR FINISH SCHEDULE

ROOM NAME & NUMBER	FLOOR	BASE	WALLS					CLNG. HT.	CLNG. HT.
			N	S	E	W	CLNG.		
101 VESTIBULE	2	1			1	1	1	4	OPEN
102 BAR	2	1	1	1	1	1	1	4	OPEN
103 SEATING	2	1	1	1	1	1	1	4	OPEN
104 KITCHEN	2	1	2	2	2	2	1	9'-0"	
105 ELEC.	2	1	1	1	1	1	1	4	OPEN
106 BOTLER	2	1	1	1	1	1	1	4	OPEN
107 GRAIN	2	1	1	1	1	1	1	4	OPEN
108 LOADING	2							4	OPEN
109A BREWERY	2							4	OPEN
109B BOTTLING	2							4	OPEN
110 COOLER	2							4	OPEN
111 MENS	2	1	3	3	3	3	2	9'-0"	
112 WDMNS	2	1	3	3	3	3	2	9'-0"	
113 STORAGE	3	1	1	1	1	1	1	4	OPEN
114 STORAGE	3	1	1	1	1	1	1	4	OPEN
115 EXIT	2	1	1	1	1	1	1	4	OPEN
201 OPEN OFFICE AREA	1	1	1	1	1	1	1	11'-0"	
202 EXIT	2	1	1	1	1	1	1	4	OPEN
203 MENS	2	1	3	3	3	3	2	9'-0"	
204 WDMNS	2	1	3	3	3	3	2	9'-0"	
205 STORAGE	2	1	1	1	1	1	1	4	OPEN
206 STORAGE	2	1	1	1	1	1	1	4	OPEN
207 MEZZANINE	2	NA		5	5			4	OPEN
208 STORAGE	2	NA		5				4	OPEN

FLOOR	CEILING	WALLS	BASE
1. CARPET TILES	1. ACOUSTIC SUSPENDED GRID (WASHABLE)	1. GPOW/PNT	1. 4" RUBBER
2. CONCRETE; SEALED	2. ACOUSTIC SUSPENDED GRID 2x4	2. WASHABLE WALLBOARD	2. CERAMIC TILE
3. VINYL TILE	3. W. GPOW; CERAMIC TILE TO 5'-0" HT.	3. WASHABLE WALLBOARD	
4. CERAMIC TILES	4. EXPOSED STRUCTURE	4. EXPOSED STRUCTURE	
	5. METAL BUILDING LINER PANEL		

RATING	WIDTH		LOCATION	CONSTRUCTION DESCRIPTION	WALL SECTIONS
	STEEL	ACTUAL			
1 HR	3 5/8"	4 7/8"	INTERIOR	1 LAYER 5/8" GPOW BOTH SIDES 3 1/2" METAL STUDS @ 16" O.C. W/ SOUND INSULATION (W/ CERAMIC TILE ON R.R. SIDE OF WALLS)	
	14"	15 3/4"	INTERIOR PLUMBING	1 LAYER 5/8" W.P. GPOW BOTH SIDES OF 6" METAL STUDS @ 16" O.C. (2 - 6" METAL STUD WALLS TOTAL 14" FACE TO FACE) (W/ CERAMIC TILE ON R.R. SIDE OF WALLS)	
	6"	7 1/4"	INTERIOR PLUMBING	1 LAYER 5/8" W.P. GPOW BOTH SIDES OF 6" METAL STUDS @ 16" O.C.	
	6"	7 1/4"	INTERIOR (BETWEEN BAR & BREW)	PREMANUFACTURED METAL BUILDING FRAME W/ 5/8" TYPE "X" GPOW BOTH SIDES FRP LINER PANEL BREWERY SIDE	SEE WALL SECTION
	6"	8 1/2"	EXTERIOR WALLS	6" METAL STUD IN/ILL @ 16" O.C. W/ R-19 INSULATION 5/8" GPOW INTERIOR SIDE, O.S.B. & SIPS EXTERIOR	SEE WALL SECTION
	12"		EXTERIOR WALLS	PREMANUFACTURED METAL BUILDING FRAME W/ METAL LINER PANEL TO ROOF FRP LINER PANEL TO 8'-0" AFF	SEE WALL SECTION
	10 1/2"		COOLER WALLS	PREMANUFACTURED METAL BUILDING FRAME W/ METAL LINER PANEL TO ROOF	SEE WALL SECTION



1 1ST LEVEL FLOOR PLAN
 A1.0 F.F. ELEV= 100'-0" 1/8" = 1'-0"

1 HR FIRE RATED WALL ASSEMBLY
 NOTE: DIMENSIONS TO FACE OF STUD WINDOW SILLS TO BE CULTURED MARBEL OR EQUIV.

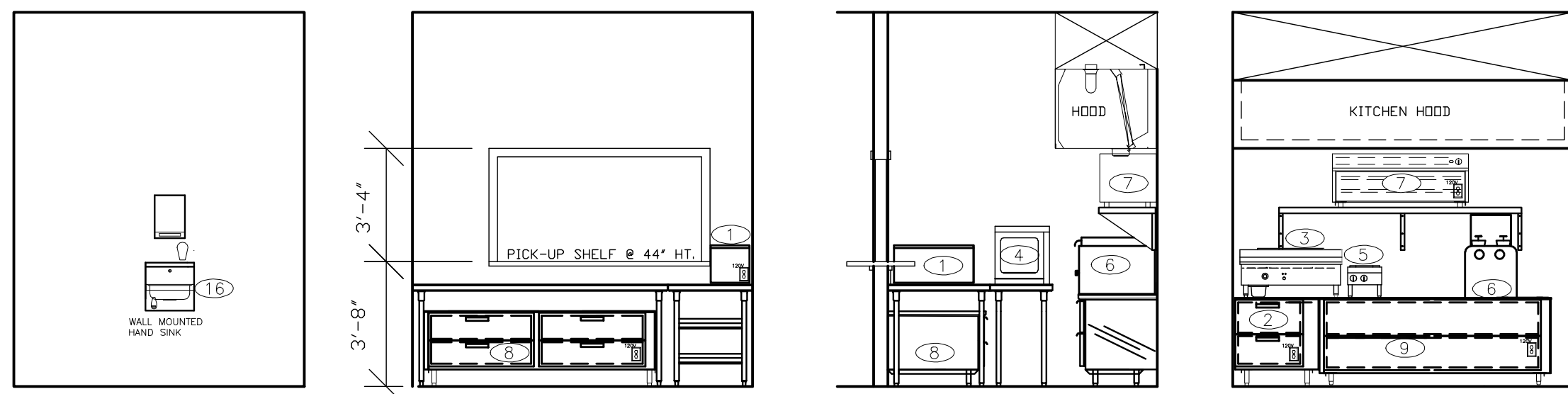
THE CONTRACTOR SHALL VERIFY ALL DIMENSIONS PRIOR TO CONSTRUCTION. WRITTEN DIMENSIONS SHALL TAKE PRECEDENCE OVER SCALED DIMENSIONS. ANY DISCREPANCY IN DIMENSIONS AND/OR DRAWINGS SHALL BE BROUGHT TO THE ATTENTION OF THE ARCHITECT/OWNER AND RESOLVED PRIOR TO THE COMMENCEMENT OF ANY MATERIAL ORDERING OR WORK.
 ALL WORK TO BE PERFORMED IN ACCORDANCE WITH LOCAL CODES. IF THE DRAWINGS & SPECIFICATIONS ARE IN CONFLICT WITH ANY APPLICABLE CODE, THE CODE WILL TAKE PRECEDENCE. HOWEVER, IF SUCH CONFLICT OCCURS, CONTACT THE OWNER OR THE OWNER'S AUTHORIZED REPRESENTATIVE PRIOR TO IMPLEMENTING ANY CHANGES TO THE PLANS.

EDGEWATER BREWERY & TASTING ROOM
 905 STRUTHERS AVENUE
 GRAND JUNCTION, COLORADO

11-16-11

A1.0

CREGG ASSOCIATES
 GRAND JUNCTION COLORADO 81507
 151 LITTLE PARK ROAD
 TEL: 970 245 9654
 rdreg@cbi.com



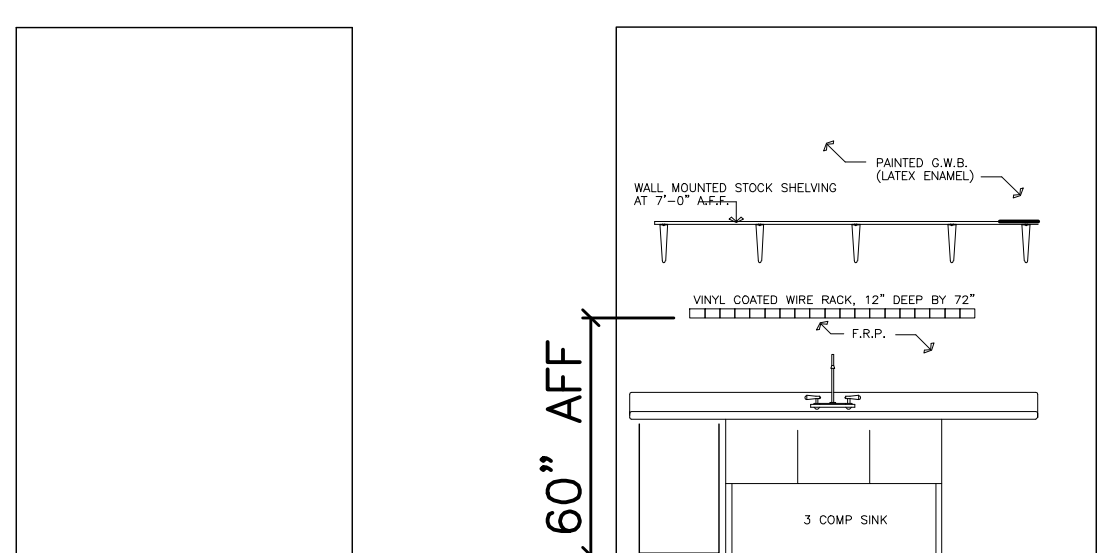
VIEW "A"
1/4" = 1'- 0"

VIEW "B"
1/4" = 1'- 0"

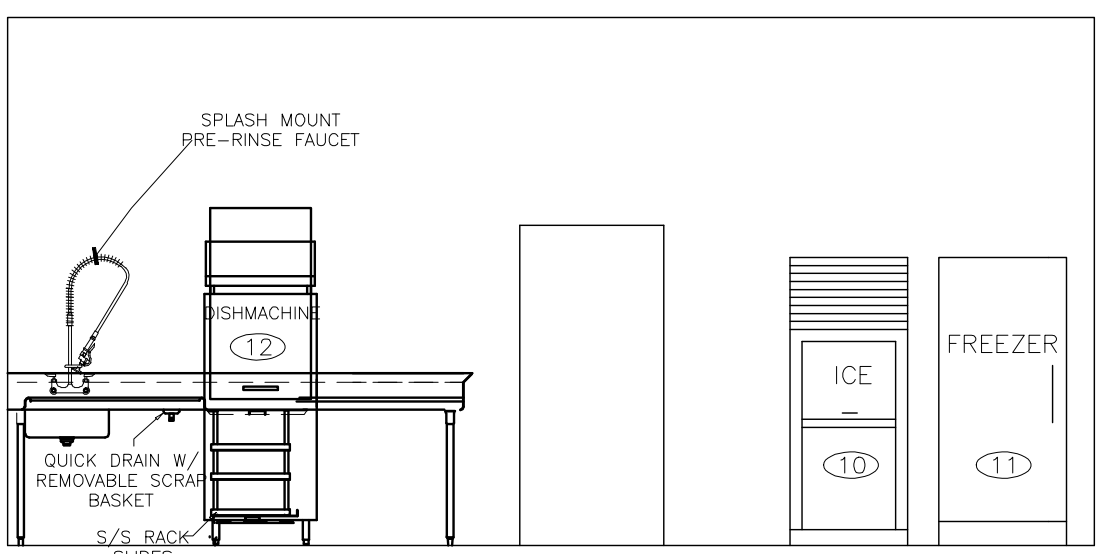
VIEW "C"
1/4" = 1'- 0"

VIEW "D"
1/4" = 1'- 0"

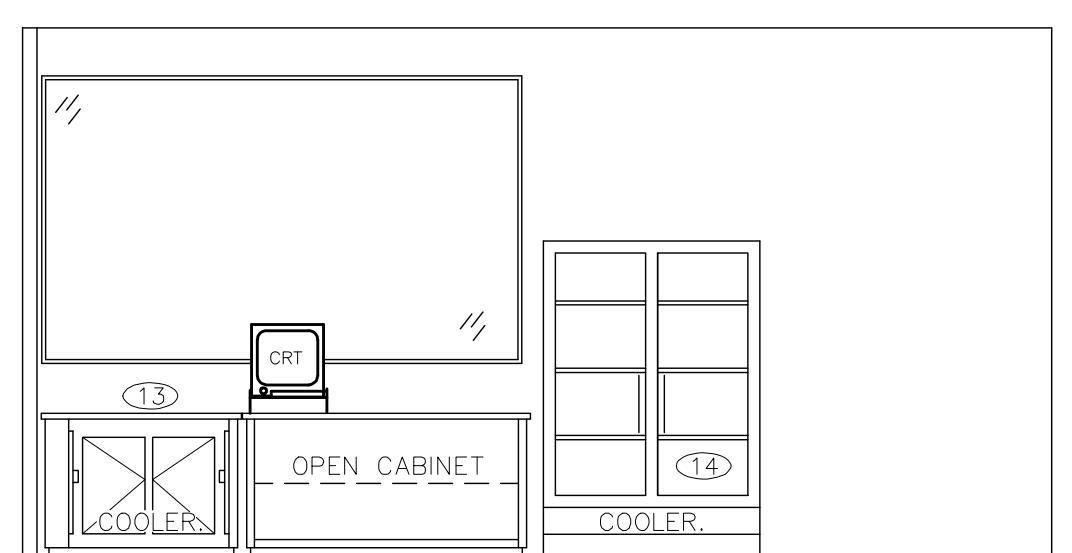
EQUIP. #	DISCRIPTION	MODEL #	SIZE	POWER
1	HEAT N SERVE		28 3/4"x13 3/4"x9 3/4"	120V 1600W 13.3AMP
2	DRAWER WARMERS		29 1/4" x21 1/2"x15" HT.	208V 338W 1.6AMP
3	HEAVY-DUTY GAS GRIDDLE		36"x24" GRIDDLE PLATE	GAS 81,000 BTU
4	AMANA MICROWAVE OVEN		20 3/4" x19 1/4" x18" HT.	208V 2700W 13AMP
5	GAS HOTPLATES		12"x24 3/4"x13 1/2"	GAS 50,000 BTU
6	COUNTER TOP GAS FRYERS		18"x22"	GAS 45,000, 38,000 BTU
7	GAS INFRARED CHEESEMELTER		48"x20 1/2"	GAS 36,000 BTU
8	CHEF REFRIGERATOR BASE		83 5/8"x32x20 1/2" HT.	115/60/1
9	CHEF FREEZER BASE		84x31x26 1/2" HT.	115/60/1
10	ICE MACHINE		30"x27"x37" HT.	208/230/60/1
11	FREEZER		-	115/60/1
12	DISH WASHER CONSERVER XL		33"x25 1/4"x33"x68 1/2" HT.	115/60/1
13	24" BACK BAR COOLER		49L x 24 D x 35 H	115/60/1
14	GLASS DOOR MERCHANDISER		54L x 29D x 78H	115/60/1
15	3 COMPARTMENT SINK		90"Lx 24"Wx 39 1/2"HT.	
16	HAND SINK		12x18.5x33 HT.	
17	STANDARD ICE BIN		24"x12"x30.5" HT.	
18	4 COMPARTMENT SINK		96"x21"x30" HT.	
19	WORK TABLE		7'6"x24"x34" HT.	
20	WORK TABLE		2'6"x24"x34" HT.	
21	KITCHEN HOOD		TO FIT	



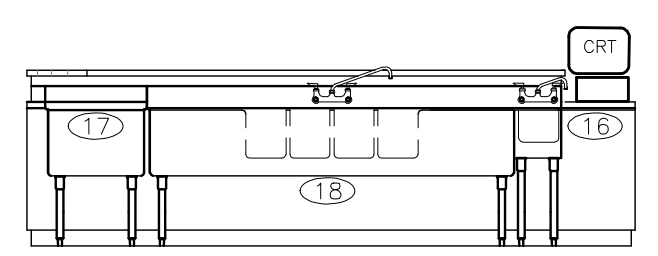
VIEW "E"
1/4" = 1'- 0"



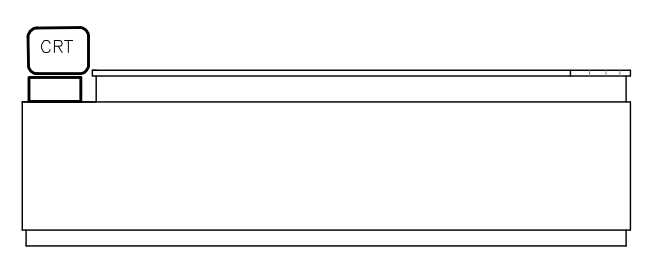
VIEW "F"
1/4" = 1'- 0"



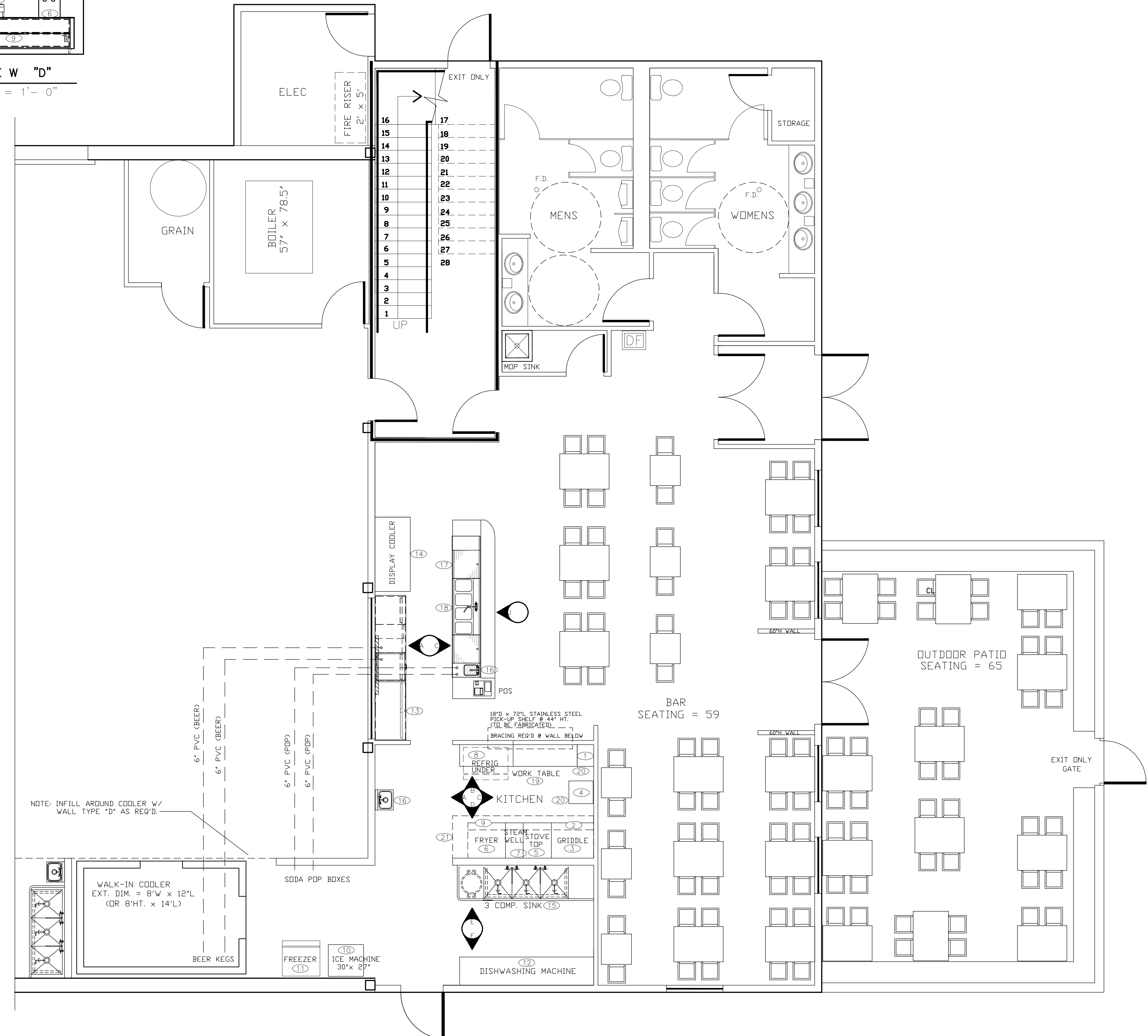
VIEW "G"
1/4" = 1'- 0"



VIEW "H"
1/4" = 1'- 0"

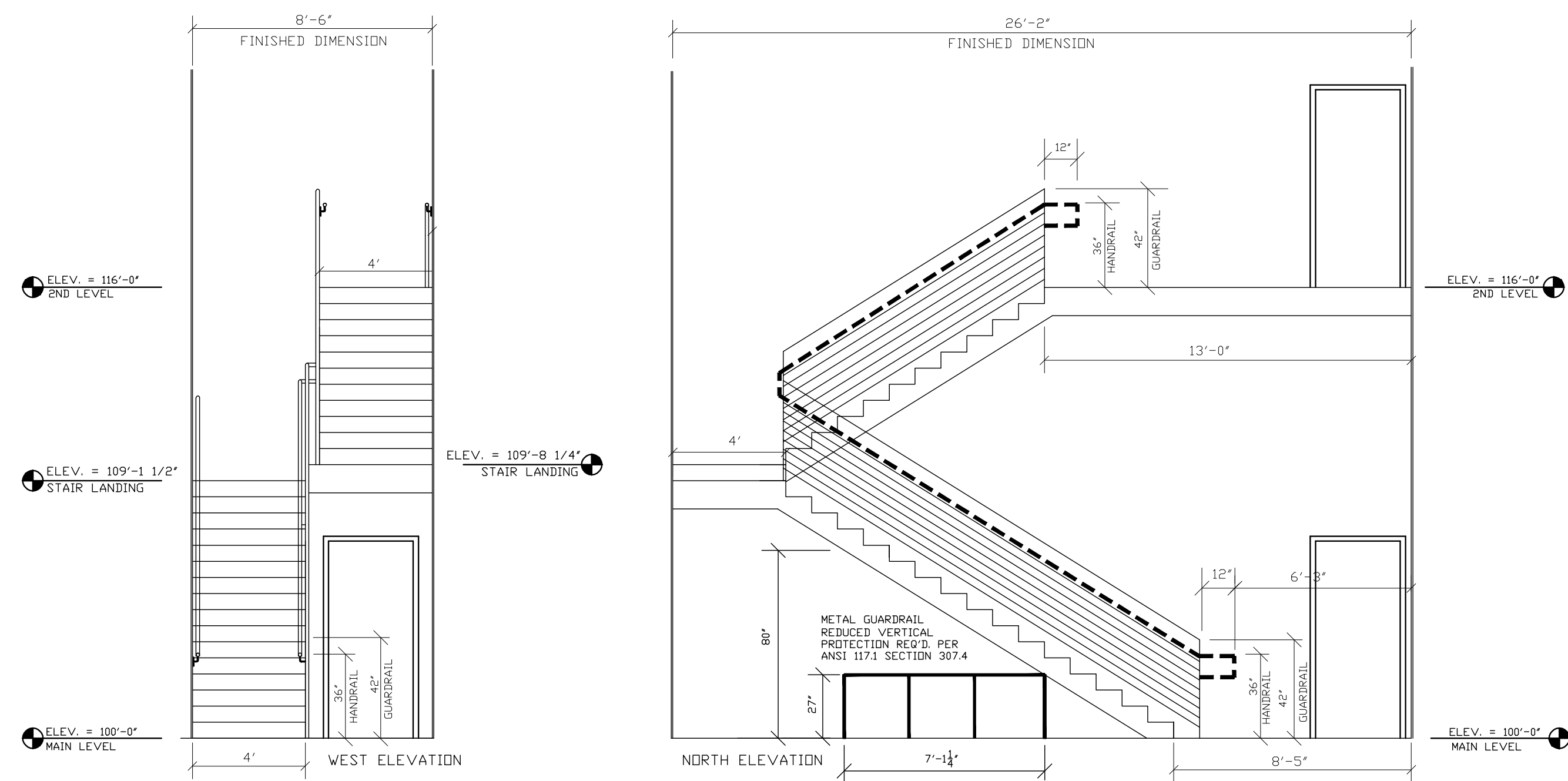


VIEW "J"
1/4" = 1'- 0"



RESTAURANT SEATING PLAN
1/4" = 1'- 0"

THE CONTRACTOR SHALL VERIFY ALL DIMENSIONS PRIOR TO CONSTRUCTION. WRITTEN DIMENSIONS SHALL TAKE PRECEDENCE OVER SCALED DIMENSIONS. ANY DISCREPANCY IN DIMENSIONS AND/OR DRAWINGS SHALL BE BROUGHT TO THE ATTENTION OF THE ARCHITECT/OWNER AND RESOLVED PRIOR TO THE COMMENCEMENT OF ANY MATERIAL ORDERING OR WORK.
ALL WORK TO BE PERFORMED IN ACCORDANCE WITH LOCAL CODES. IF THE DRAWINGS & SPECIFICATIONS ARE IN CONFLICT WITH ANY APPLICABLE CODE, THE CODE WILL TAKE PRECEDENCE. HOWEVER, IF SUCH CONFLICT OCCURS, CONTACT THE OWNER OR THE OWNER'S AUTHORIZED REPRESENTATIVE PRIOR TO IMPLEMENTING ANY CHANGES TO THE PLANS.

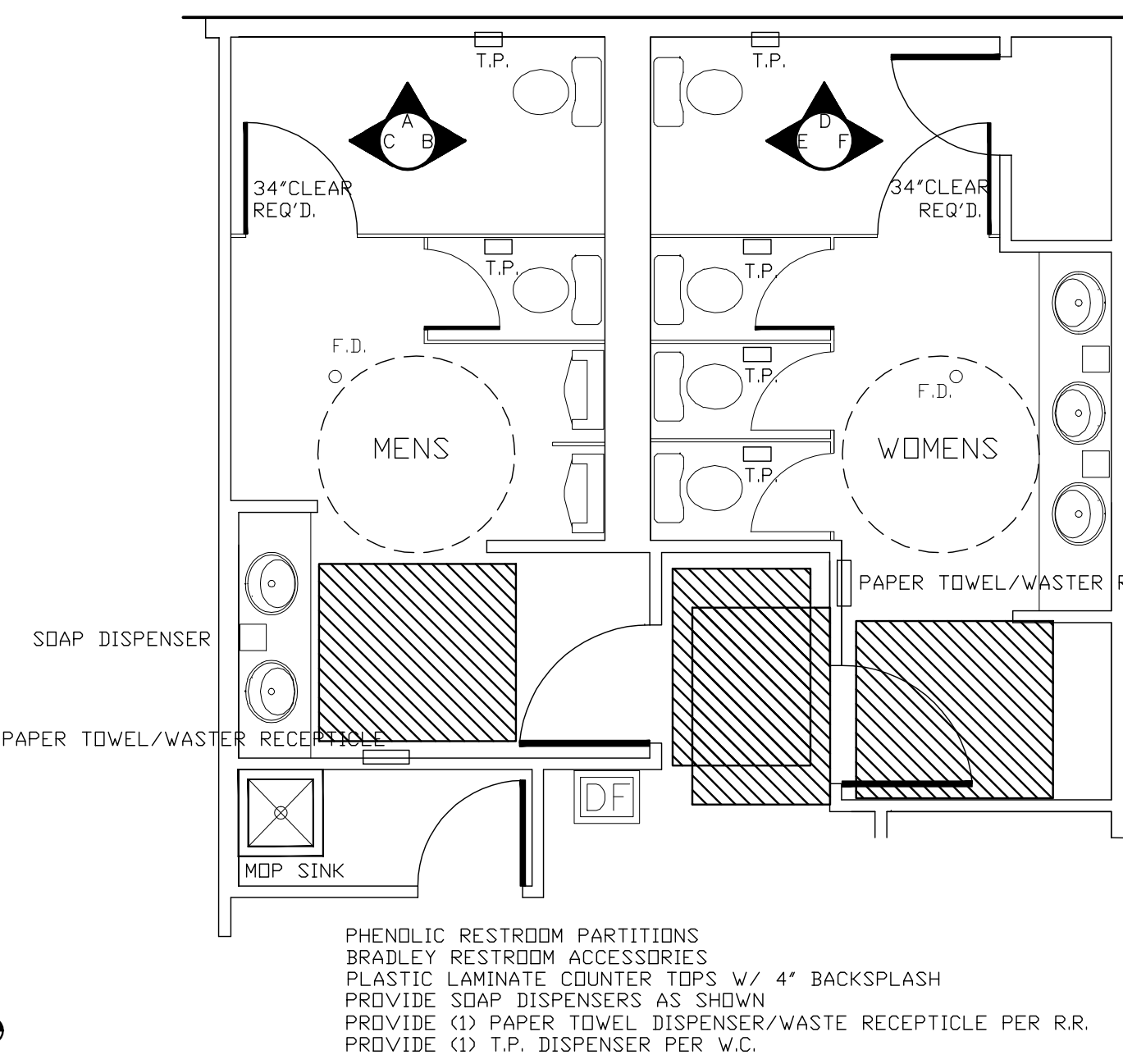


GUARDRAILS:
 GUARDRAIL DESIGN SHALL MEET ALL REQUIREMENTS OF IBC 2006 SECTION 1013
 GUARDRAILS REQ'D WHEN RAMP, BALCONY, WALKING SURFACE IS LOCATED 30" ABOVE ADJACENT GRADE
 GUARDRAILS TO BE NOT LESS THAN 42" HIGH AND SHALL HAVE BALUSTERS OR ORNAMENTAL PATTERNS SO THAT A 4" DIAMETER SPHERE CANNOT PASS THROUGH ANY OPENING UP TO A HT. OF 34", FROM 34" TO 42" ABOVE THE ADJACENT WALKING SURFACE, AN 8" DIAMETER SPHERE SHALL NOT PASS THROUGH RAILINGS

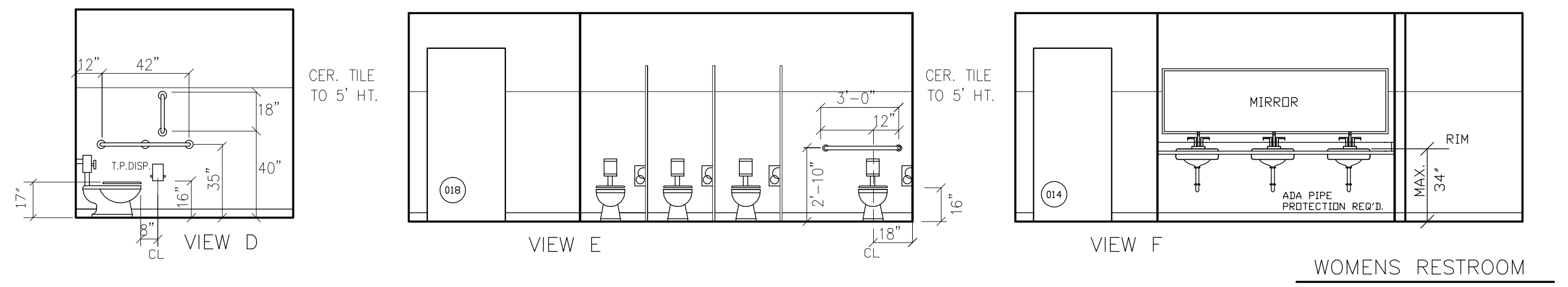
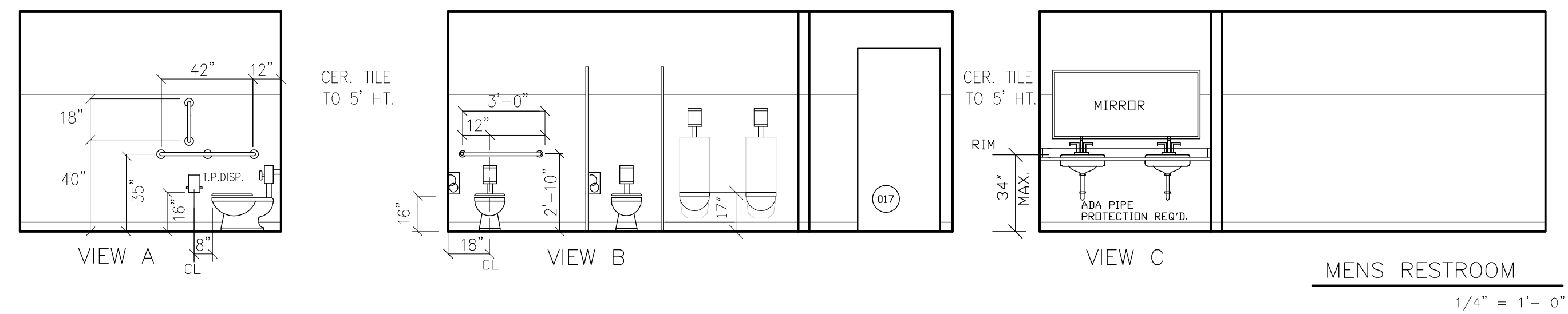
HANDRAILS:
 HANDRAIL DESIGN SHALL MEET ALL REQUIREMENTS OF IBC 2006 SECTION 1012
 1 1/2" DIAMETER @ 34" MIN TO 38" MAX HT. MEASURED ABOVE STAIR NOSING
 HANDRAILS SHALL RETURN TO WALL OR BE CONTINUOUS TO HANDRAIL OF ADJACENT STAIR FLIGHT WHERE NOT CONTINUOUS BETWEEN FLIGHTS, HANDRAILS SHALL EXTEND HORIZONTALLY 12" MIN. BEYOND TO RISER AND CONTINUE TO SLOPE FOR THE DEPTH OF 1 TREAD BEYOND THE BOTTOM RISER CLEARANCE BETWEEN HANDRAIL & WALL OR OTHER SURFACE SHALL BE 1.5" MIN.

3 STAIR DETAILS
 A1.3 1/4" = 1'-0"

NOTES:
 28 RISERS @ 6.85" EA; RUN = 11"
 PROVIDE HANDRAILS BOTH SIDES OF STAIRS
 1 1/2" METAL HANDRAILS/GUARDRAILS
 METAL STAIRS TO HAVE CLOSED RISERS & CONC. TREADS (IN STEEL PANO GUARDRAILS 4" O.C. SPACING UP TO 34"; 8" O.C. ABOVE 34" HT.)

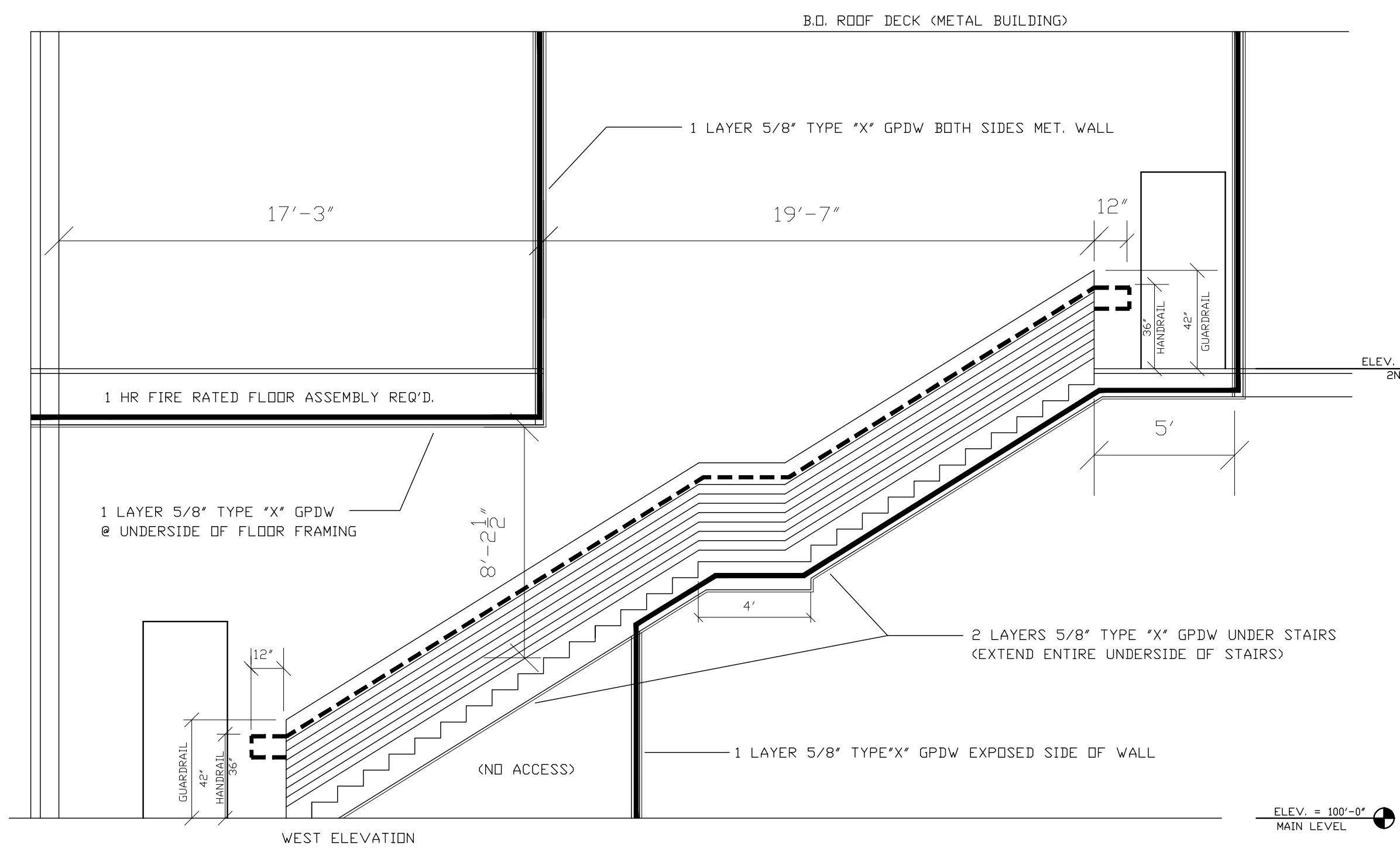


1 ENLARGED RESTROOM PLAN
 A1.3 NOTE: DIMENSIONS TO FACE OF STUD 1/4" = 1'-0"



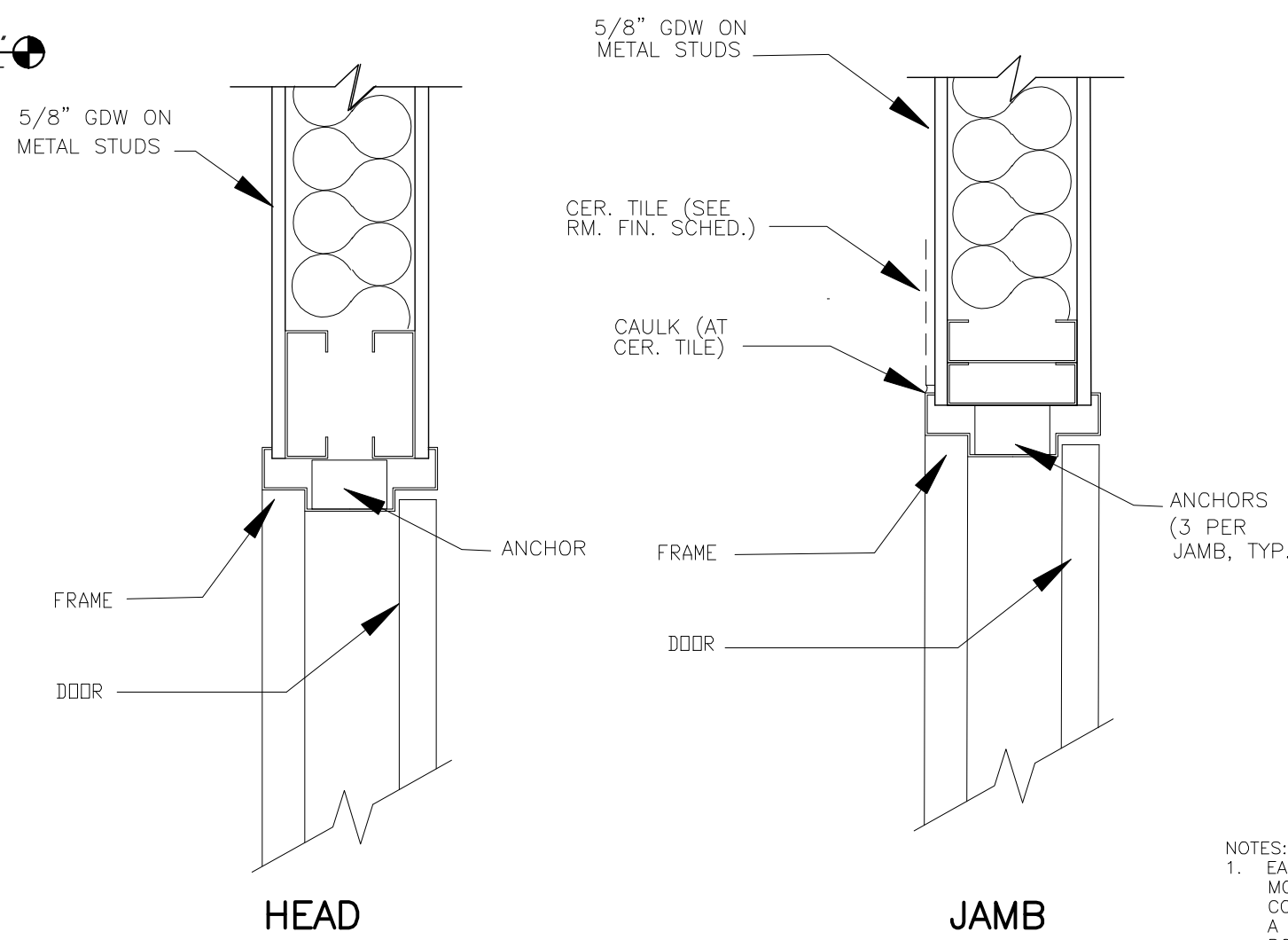
2 RESTROOM ELEVATIONS
 A1.3 1/4" = 1'-0"

NOTE: ALL RESTROOM FIXTURES SHALL COMPLY WITH ICC/ANSI A117.1-2003
 PHENOLIC RESTROOM PARTITIONS
 BRADLEY RESTROOM ACCESSORIES
 PLASTIC LAMINATE COUNTER TOPS W/ 4" BACKSPLASH
 PROVIDE (2) S.D.A.P. DISPENSERS PER R.R.
 PROVIDE (1) PAPER TOWEL DISPENSER/WASTE RECEPTICLE PER R.R.
 PROVIDE (1) T.P. DISPENSER PER W.C.

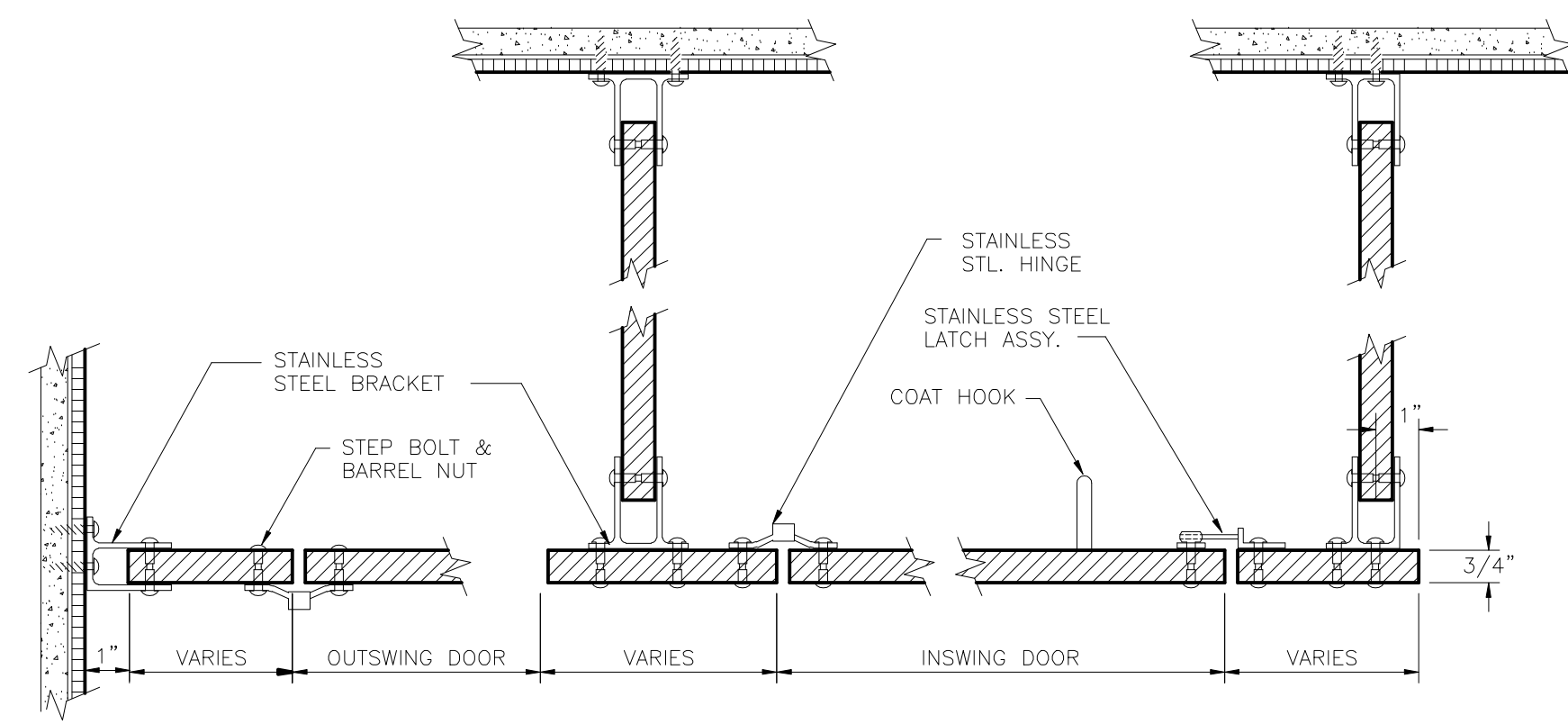


4 STAIR DETAILS
 A1.3 1/4" = 1'-0"

NOTES:
 28 RISERS @ 6.85" EA; RUN = 11"
 PROVIDE HANDRAILS BOTH SIDES OF STAIRS
 1 1/2" METAL HANDRAILS/GUARDRAILS
 METAL STAIRS TO HAVE CLOSED RISERS & CONC. TREADS (IN STEEL PANO GUARDRAILS 4" O.C. SPACING UP TO 34"; 8" O.C. ABOVE 34" HT.)
 1 HR FIRE RATED WALL ASSEMBLY



INTERIOR H.M. DOOR FRAME
 N.T.S.



TOILET PARTITION DETAILS
 PHENOLIC RESTROOM PARTITIONS N.T.S.

NOTES:
 1. EACH COMPARTMENT WILL BE COMPLETE WITH ALL STAINLESS STEEL SURFACE MOUNTED HARDWARE INCLUDING: DOOR HINGES, LATCH, STOP AND KEEPER, COAT HOOK AS WELL AS ALL THE NECESSARY FITTINGS AND FASTENINGS FOR A COMPLETE INSTALLATION. FASTENERS ARE CHROME PLATED BRASS THROUGH BOLTS WITH ONE-WAY TAMPER-PROOF HEADS, DOOR HINGES TO BE SURFACE MOUNTED AND THROUGH BOLT ATTACHED TO DOORS AND PLASTERS. HINGE MATERIAL TO BE 12 GAUGE TYPE 304 STAINLESS STEEL WITH BEARING ANGLES OF 16-GAUGE TYPE 304 STAINLESS STEEL TO BE ELECTRICALLY WELDED TO FULL LENGTH OF BOTH LEAVES OF THE TOP AND BOTTOM HINGE ASSEMBLIES TO PREVENT DOOR SAC. FULLY ADJUSTABLE DOOR POSITIONING CAM AND RINTE TO BE MADE FROM NYLON WITH STAINLESS STEEL PIN ENCASED IN NYLON. PIN MUST BE HELD IN POSITION WITH SNAP RING DESIGN. STRIKER AND KEEPER TO BE 12 GAUGE TYPE 304 STAINLESS STEEL. COAT HOOK AND BUMPER TO BE TYPE 304 STAINLESS STEEL.
 2. PROVIDE BACKING FOR MOUNTING PARTITIONS TO WALL AS NECESSARY.

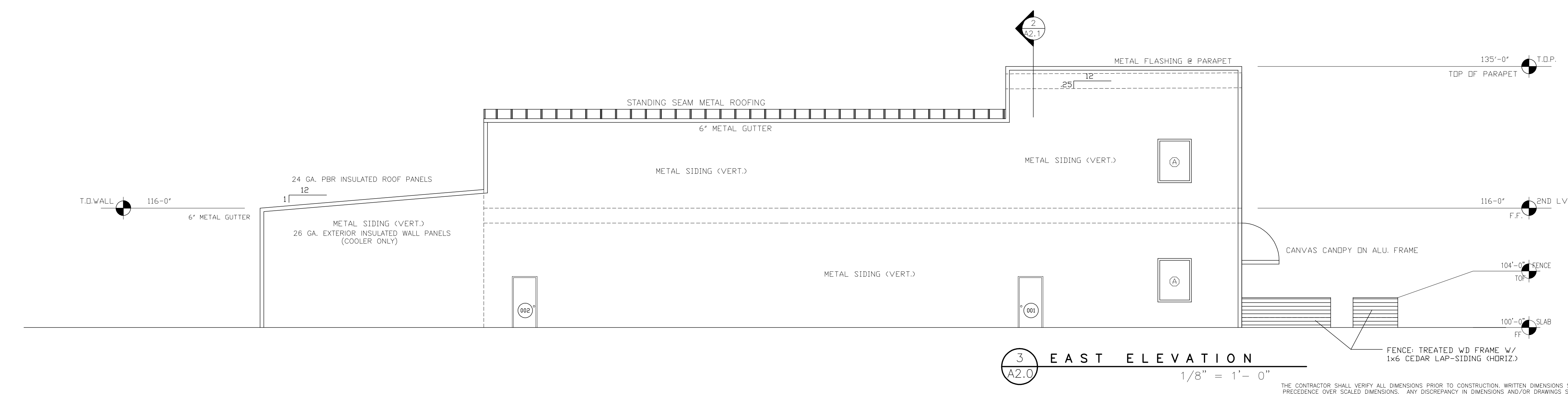
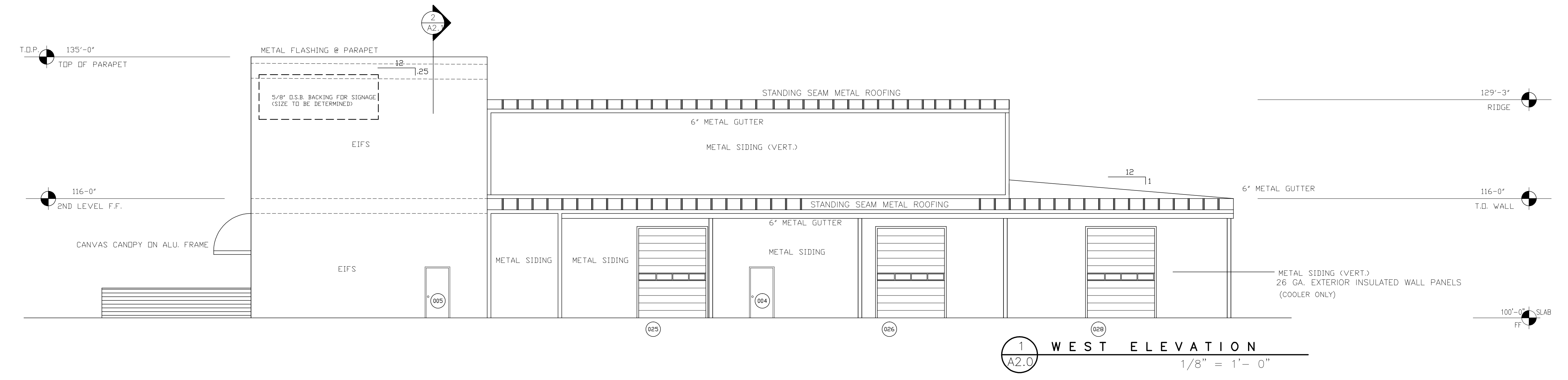
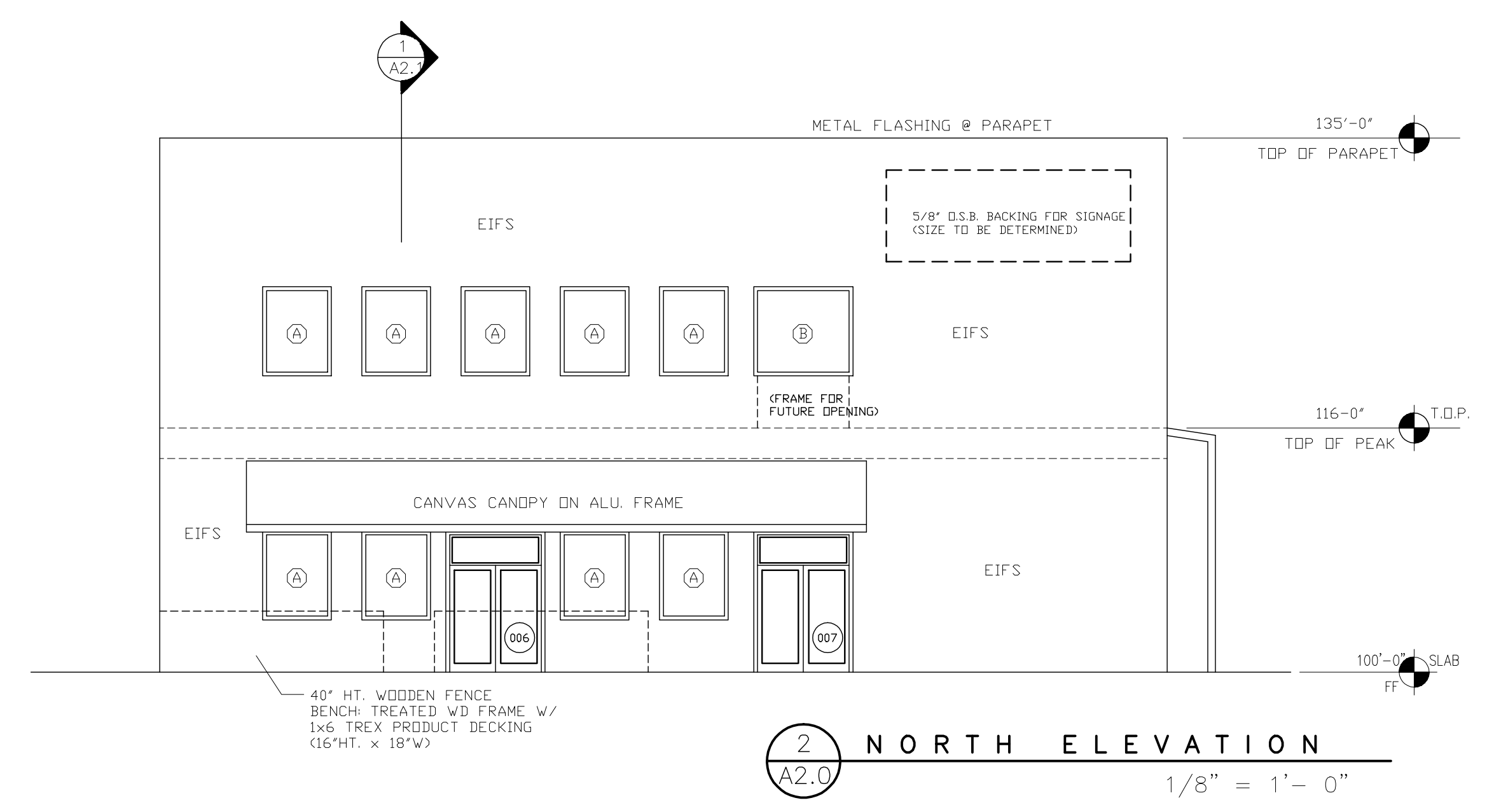
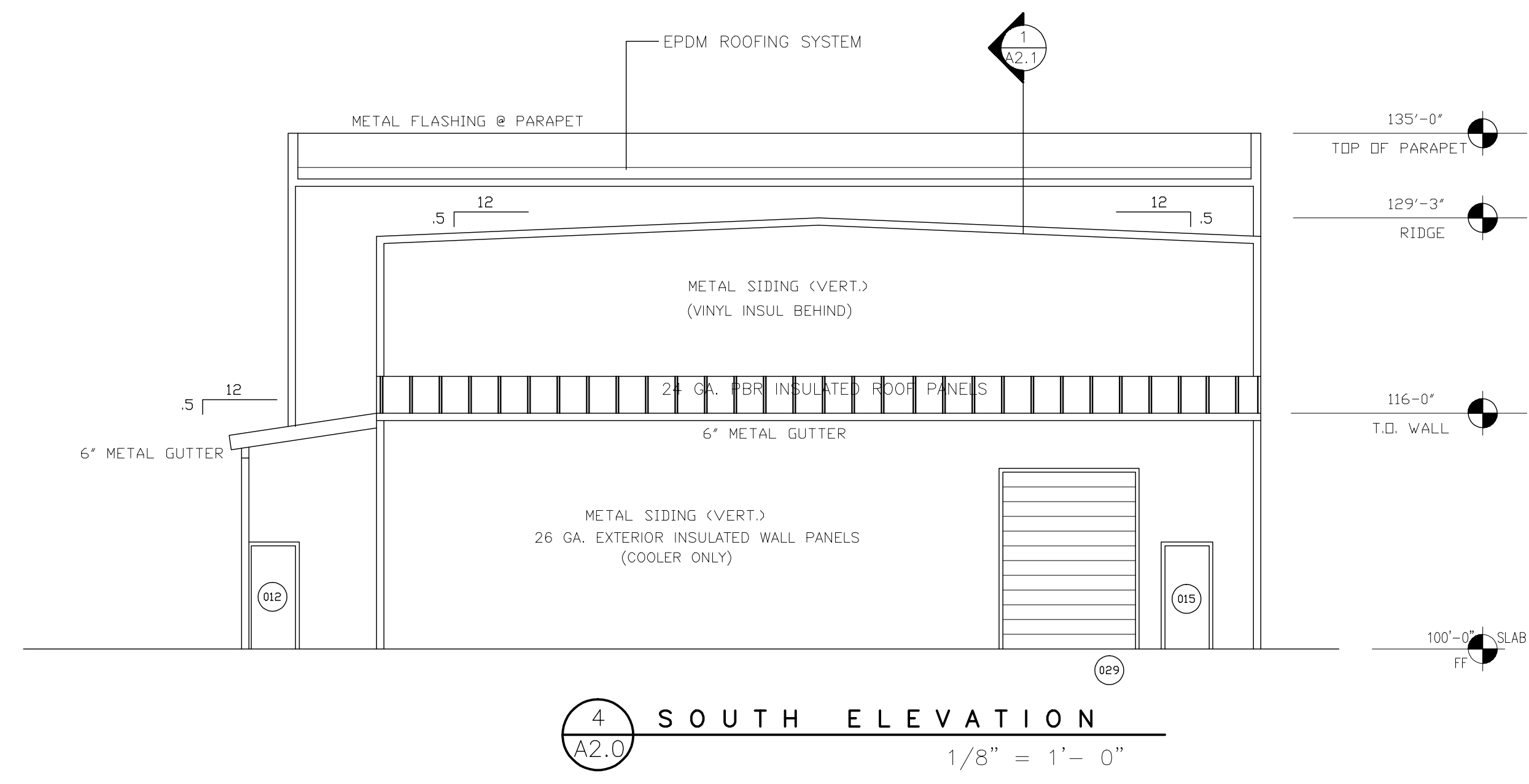
THE CONTRACTOR SHALL VERIFY ALL DIMENSIONS PRIOR TO CONSTRUCTION. WRITTEN DIMENSIONS SHALL TAKE PRECEDENCE OVER SCALED DIMENSIONS. ANY DISCREPANCY IN DIMENSIONS AND/OR DRAWINGS SHALL BE BROUGHT TO THE ATTENTION OF THE ARCHITECT/OWNER AND RESOLVED PRIOR TO THE COMMENCEMENT OF ANY MATERIAL ORDERING OR WORK.
 ALL WORK TO BE PERFORMED IN ACCORDANCE WITH LOCAL CODES; IF THE DRAWINGS & SPECIFICATIONS ARE IN CONFLICT WITH ANY APPLICABLE CODE, THE CODE WILL TAKE PRECEDENCE. HOWEVER, IF SUCH CONFLICT OCCURS, CONTACT THE OWNER OR THE OWNER'S AUTHORIZED REPRESENTATIVE PRIOR TO IMPLEMENTING ANY CHANGES TO THE PLANS.

EDGEWATER BREWERY & TASTING ROOM
 905 STRUTHERS AVENUE
 GRAND JUNCTION, COLORADO

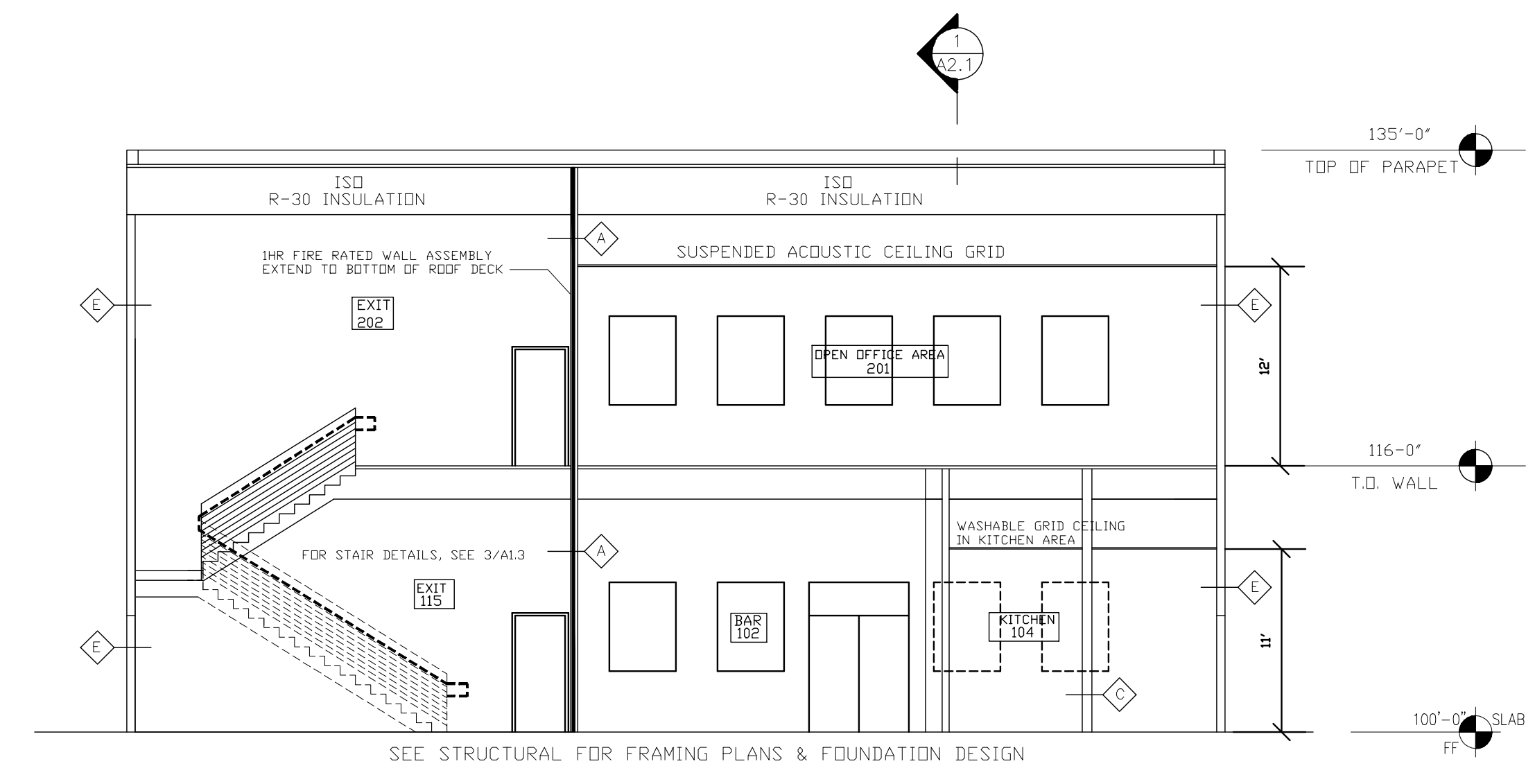
11-16-11

A1.3

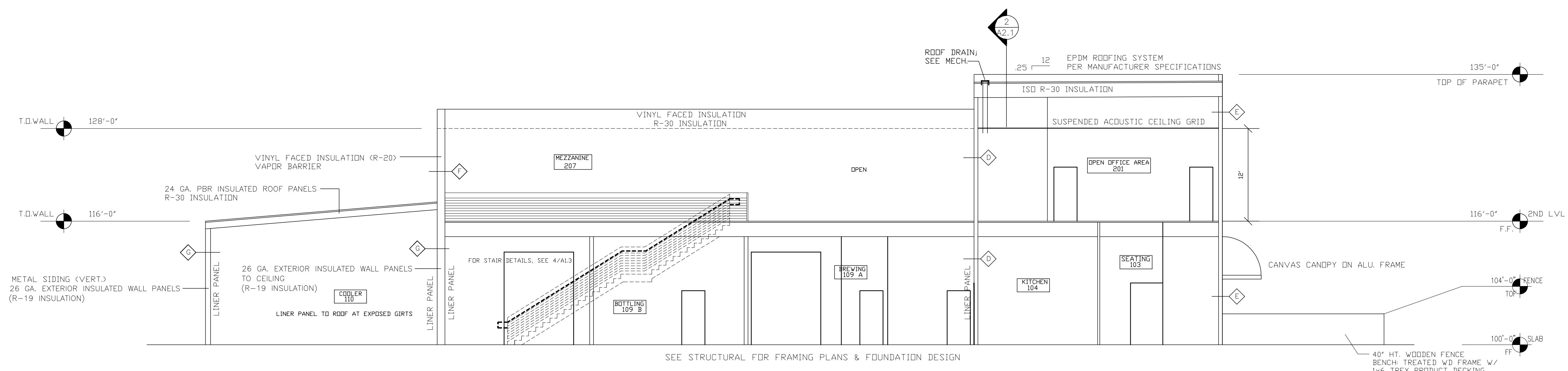
CREGG ASSOCIATES
 151 LITTLE PARK ROAD
 GRAND JUNCTION COLORADO 81507
 TEL: 970 240 9604
 rdcreg@aol.com



THE CONTRACTOR SHALL VERIFY ALL DIMENSIONS PRIOR TO CONSTRUCTION. WRITTEN DIMENSIONS SHALL TAKE PRECEDENCE OVER SCALED DIMENSIONS. ANY DISCREPANCY IN DIMENSIONS AND/OR DRAWINGS SHALL BE BROUGHT TO THE ATTENTION OF THE ARCHITECT/OWNER AND RESOLVED PRIOR TO THE COMMENCEMENT OF ANY MATERIAL ORDERING OR WORK.
 ALL WORK TO BE PERFORMED IN ACCORDANCE WITH LOCAL CODES. IF THE DRAWINGS & SPECIFICATIONS ARE IN CONFLICT WITH ANY APPLICABLE CODE, THE CODE WILL TAKE PRECEDENCE. HOWEVER, IF SUCH CONFLICT OCCURS, CONTACT THE OWNER OR THE OWNER'S AUTHORIZED REPRESENTATIVE PRIOR TO IMPLEMENTING ANY CHANGES TO THE PLANS.



2 BUILDING SECTION
 A2.1 1/8" = 1' - 0"



1 BUILDING SECTION
 A2.1 1/8" = 1' - 0"

THE CONTRACTOR SHALL VERIFY ALL DIMENSIONS PRIOR TO CONSTRUCTION. WRITTEN DIMENSIONS SHALL TAKE PRECEDENCE OVER SCALED DIMENSIONS. ANY DISCREPANCY IN DIMENSIONS AND/OR DRAWINGS SHALL BE BROUGHT TO THE ATTENTION OF THE ARCHITECT/OWNER AND RESOLVED PRIOR TO THE COMMENCEMENT OF ANY MATERIAL ORDERING OR WORK.
 ALL WORK TO BE PERFORMED IN ACCORDANCE WITH LOCAL CODES. IF THE DRAWINGS & SPECIFICATIONS ARE IN CONFLICT WITH ANY APPLICABLE CODE, THE CODE WILL TAKE PRECEDENCE. HOWEVER, IF SUCH CONFLICT OCCURS, CONTACT THE OWNER OR THE OWNER'S AUTHORIZED REPRESENTATIVE PRIOR TO IMPLEMENTING ANY CHANGES TO THE PLANS.